

TCL1A Antibody (monoclonal) (M13)

Mouse monoclonal antibody raised against a partial recombinant TCL1A.

Catalog # AT4195a

Product Information

Application	E
Primary Accession	P56279
Other Accession	NM_021966
Reactivity	Human
Host	mouse
Clonality	monoclonal
Isotype	IgG1 Kappa
Clone Names	3A4
Calculated MW	13460

Additional Information

Gene ID	8115
Other Names	T-cell leukemia/lymphoma protein 1A, Oncogene TCL-1, Oncogene TCL1, Protein p14 TCL1, TCL1A, TCL1
Target/Specificity	TCL1A (NP_068801.1, 61 a.a. ~ 114 a.a) partial recombinant protein with GST tag. MW of the GST tag alone is 26 KDa.
Dilution	E~~N/A
Format	Clear, colorless solution in phosphate buffered saline, pH 7.2 .
Storage	Store at -20°C or lower. Aliquot to avoid repeated freezing and thawing.
Precautions	TCL1A Antibody (monoclonal) (M13) is for research use only and not for use in diagnostic or therapeutic procedures.

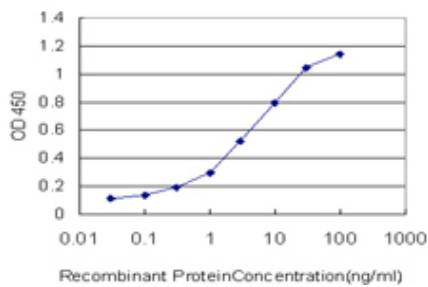
Background

Overexpression of the TCL1 gene in humans has been implicated in the development of mature T cell leukemia, in which chromosomal rearrangements bring the TCL1 gene in close proximity to the T-cell antigen receptor (TCR)-alpha (MIM 186880) or TCR-beta (MIM 186930) regulatory elements (summarized by Virgilio et al., 1998 [PubMed 9520462]). In normal T cells TCL1 is expressed in CD4-/CD8- cells, but not in cells at later stages of differentiation. TCL1 functions as a coactivator of the cell survival kinase AKT (MIM 164730) (Laine et al., 2000 [PubMed 10983986]).

References

TCL1 protein expression in testicular germ cell tumors. Lau SK, et al. Am J Clin Pathol, 2010 May. PMID 20395523. T-cell leukemia 1 expression in nodal Epstein-Barr virus-negative diffuse large B-cell lymphoma and primary mediastinal B-cell lymphoma. Gualco G, et al. Hum Pathol, 2010 Sep. PMID 20382409. Personalized smoking cessation: interactions between nicotine dose, dependence and quit-success genotype score. Rose JE, et al. Mol Med, 2010 Jul-Aug. PMID 20379614. CD5+CD23+ leukemic cell populations in TCL1 transgenic mice show significantly increased proliferation and Akt phosphorylation. Efanov A, et al. Leukemia, 2010 May. PMID 20357824. IGHV3-21 gene usage is associated with high TCL1 expression in chronic lymphocytic leukemia. Mansouri MR, et al. Eur J Haematol, 2010 Feb 1. PMID 19889012.

Images



Detection limit for recombinant GST tagged TCL1A is approximately 0.1 ng/ml as a capture antibody.

Please note: All products are 'FOR RESEARCH USE ONLY. NOT FOR USE IN DIAGNOSTIC OR THERAPEUTIC PROCEDURES'.