

TCP1 Antibody (monoclonal) (M01)

Mouse monoclonal antibody raised against a full length recombinant TCP1.

Catalog # AT4198a

Product Information

Application	WB, IHC, IF, E
Primary Accession	P17987
Other Accession	BC000665
Reactivity	Human
Host	mouse
Clonality	monoclonal
Isotype	IgG1 kappa
Clone Names	2B2-D6
Calculated MW	60344

Additional Information

Gene ID	6950
Other Names	T-complex protein 1 subunit alpha, TCP-1-alpha, CCT-alpha, TCP1, CCT1, CCTA
Target/Specificity	TCP1 (AAH00665, 1 a.a. ~ 556 a.a) full-length recombinant protein with GST tag. MW of the GST tag alone is 26 KDa.
Dilution	WB~~1:500~1000 IHC~~1:100~500 IF~~1:50~200 E~~N/A
Format	Clear, colorless solution in phosphate buffered saline, pH 7.2 .
Storage	Store at -20°C or lower. Aliquot to avoid repeated freezing and thawing.
Precautions	TCP1 Antibody (monoclonal) (M01) is for research use only and not for use in diagnostic or therapeutic procedures.

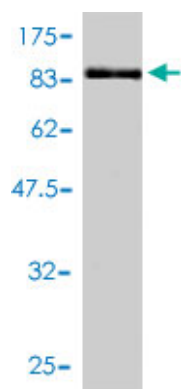
Background

The protein encoded by this gene is a molecular chaperone that is a member of the chaperonin containing TCP1 complex (CCT), also known as the TCP1 ring complex (TRiC). This complex consists of two identical stacked rings, each containing eight different proteins. Unfolded polypeptides enter the central cavity of the complex and are folded in an ATP-dependent manner. The complex folds various proteins, including actin and tubulin. Alternate transcriptional splice variants of this gene, encoding different isoforms, have been characterized. In addition, three pseudogenes that appear to be derived from this gene have been found.

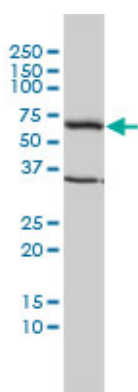
References

- 1.BBS6, BBS10, and BBS12 form a complex with CCT/TRiC family chaperonins and mediate BBSome

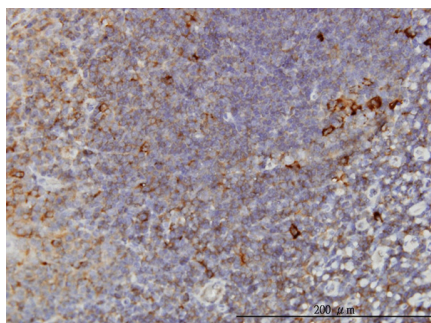
Images



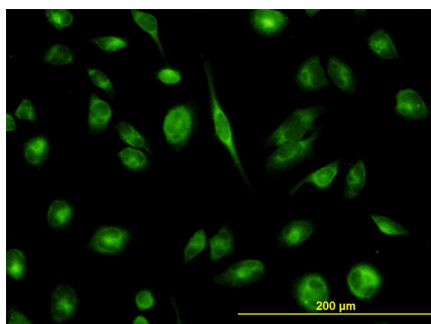
Antibody Reactive Against Recombinant Protein. Western Blot detection against Immunogen (87.01 KDa) .



TCP1 monoclonal antibody (M01), clone 2B2-D6 Western Blot analysis of TCP1 expression in HeLa ((Cat # AT4198a)

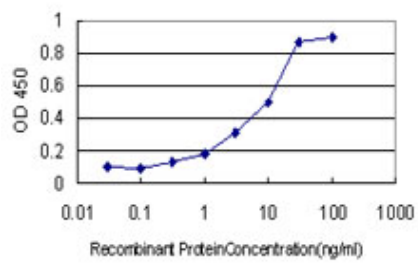


Immunoperoxidase of monoclonal antibody to TCP1 on formalin-fixed paraffin-embedded human tonsil. [antibody concentration 3 ug/ml]



Immunofluorescence of monoclonal antibody to TCP1 on HeLa cell. [antibody concentration 10 ug/ml]

Detection limit for recombinant GST tagged TCP1 is approximately 0.1 ng/ml as a capture antibody.



Please note: All products are 'FOR RESEARCH USE ONLY. NOT FOR USE IN DIAGNOSTIC OR THERAPEUTIC PROCEDURES'.