

## TESK2 Antibody (monoclonal) (M02)

Mouse monoclonal antibody raised against a partial recombinant TESK2.

Catalog # AT4209a

### Product Information

---

|                          |                          |
|--------------------------|--------------------------|
| <b>Application</b>       | WB, IF, E                |
| <b>Primary Accession</b> | <a href="#">Q96S53</a>   |
| <b>Other Accession</b>   | <a href="#">BC033085</a> |
| <b>Reactivity</b>        | Human                    |
| <b>Host</b>              | mouse                    |
| <b>Clonality</b>         | monoclonal               |
| <b>Isotype</b>           | IgG1 Kappa               |
| <b>Clone Names</b>       | 6C7                      |
| <b>Calculated MW</b>     | 63639                    |

### Additional Information

---

|                           |   |
|---------------------------|---|
| <b>Gene ID</b>            | 10420   |
| <b>Other Names</b>        | Dual specificity testis-specific protein kinase 2, Testicular protein kinase 2, TESK2                               |
| <b>Target/Specificity</b> | TESK2 (AAH33085, 405 a.a. ~ 542 a.a) partial recombinant protein with GST tag. MW of the GST tag alone is 26 KDa.   |
| <b>Dilution</b>           | WB~~1:500~1000 IF~~1:50~200 E~~N/A  |
| <b>Format</b>             | Clear, colorless solution in phosphate buffered saline, pH 7.2 .  |
| <b>Storage</b>            | Store at -20°C or lower. Aliquot to avoid repeated freezing and thawing.  |
| <b>Precautions</b>        | TESK2 Antibody (monoclonal) (M02) is for research use only and not for use in diagnostic or therapeutic procedures. |

### Background

---

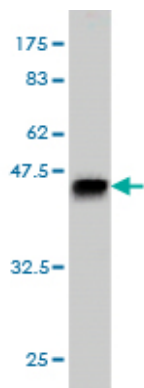
This gene product is a serine/threonine protein kinase that contains an N-terminal protein kinase domain that is structurally similar to the kinase domains of testis-specific protein kinase-1 and the LIM motif-containing protein kinases (LIMKs). Its overall structure is most related to the former, indicating that it belongs to the TESK subgroup of the LIMK/TESK family of protein kinases. This gene is predominantly expressed in testis and prostate. The developmental expression pattern of the rat gene in testis suggests an important role for this gene in meiotic stages and/or early stages of spermiogenesis.

### References

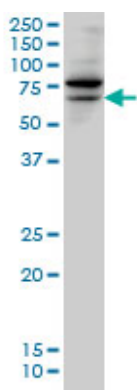
---

Diversification of transcriptional modulation: large-scale identification and characterization of putative alternative promoters of human genes. Kimura K, et al. *Genome Res*, 2006 Jan. PMID 16344560. The status, quality, and expansion of the NIH full-length cDNA project: the Mammalian Gene Collection (MGC). Gerhard DS, et al. *Genome Res*, 2004 Oct. PMID 15489334. Complete sequencing and characterization of 21,243 full-length human cDNAs. Ota T, et al. *Nat Genet*, 2004 Jan. PMID 14702039. Generation and initial analysis of more than 15,000 full-length human and mouse cDNA sequences. Strausberg RL, et al. *Proc Natl Acad Sci U S A*, 2002 Dec 24. PMID 12477932. Binding of 14-3-3beta regulates the kinase activity and subcellular localization of testicular protein kinase 1. Toshima JY, et al. *J Biol Chem*, 2001 Nov 16. PMID 11555644.

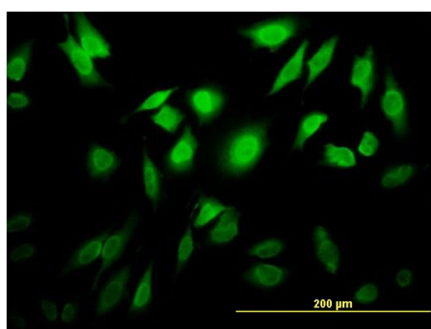
## Images



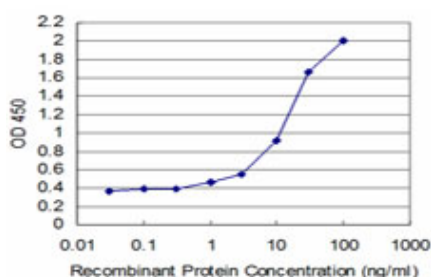
Antibody Reactive Against Recombinant Protein. Western Blot detection against Immunogen (40.81 KDa) .



TESK2 monoclonal antibody (M02), clone 6C7 Western Blot analysis of TESK2 expression in IMR-32 (Cat # AT4209a )



Immunofluorescence of monoclonal antibody to TESK2 on HeLa cell. [antibody concentration 10 ug/ml]



Detection limit for recombinant GST tagged TESK2 is approximately 0.1ng/ml as a capture antibody.

Please note: All products are 'FOR RESEARCH USE ONLY. NOT FOR USE IN DIAGNOSTIC OR THERAPEUTIC PROCEDURES'.