

THUMPD1 Antibody (monoclonal) (M01)

Mouse monoclonal antibody raised against a full length recombinant THUMPD1.

Catalog # AT4237a

Product Information

Application	WB, IHC, E
Primary Accession	Q9NXG2
Other Accession	BC000448
Reactivity	Human
Host	mouse
Clonality	monoclonal
Isotype	IgG1 Kappa
Clone Names	4A11
Calculated MW	39315

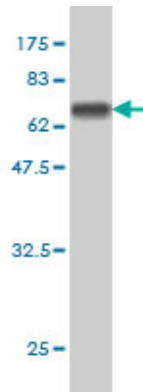
Additional Information

Gene ID	55623
Other Names	THUMP domain-containing protein 1, THUMPD1
Target/Specificity	THUMPD1 (AAH00448, 1 a.a. ~ 353 a.a) full-length recombinant protein with GST tag. MW of the GST tag alone is 26 KDa.
Dilution	WB~~1:500~1000 IHC~~1:100~500 E~~N/A
Format	Clear, colorless solution in phosphate buffered saline, pH 7.2 .
Storage	Store at -20°C or lower. Aliquot to avoid repeated freezing and thawing.
Precautions	THUMPD1 Antibody (monoclonal) (M01) is for research use only and not for use in diagnostic or therapeutic procedures.

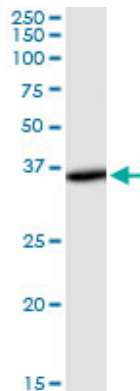
References

Global, in vivo, and site-specific phosphorylation dynamics in signaling networks. Olsen JV, et al. Cell, 2006 Nov 3. PMID 17081983. The status, quality, and expansion of the NIH full-length cDNA project: the Mammalian Gene Collection (MGC). Gerhard DS, et al. Genome Res, 2004 Oct. PMID 15489334. Complete sequencing and characterization of 21,243 full-length human cDNAs. Ota T, et al. Nat Genet, 2004 Jan. PMID 14702039. Generation and initial analysis of more than 15,000 full-length human and mouse cDNA sequences. Strausberg RL, et al. Proc Natl Acad Sci U S A, 2002 Dec 24. PMID 12477932. Genome duplications and other features in 12 Mb of DNA sequence from human chromosome 16p and 16q. Loftus BJ, et al. Genomics, 1999 Sep 15. PMID 10493829.

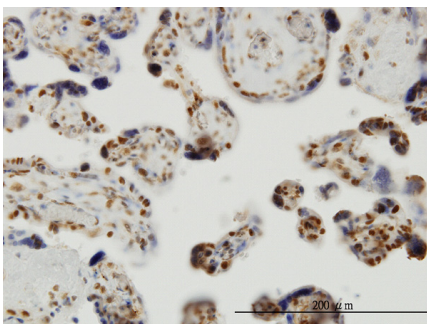
Images



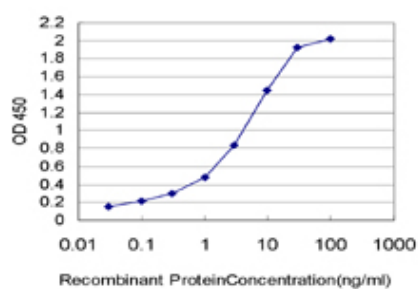
Antibody Reactive Against Recombinant Protein. Western Blot detection against Immunogen (64.57 KDa) .



THUMPD1 monoclonal antibody (M01), clone 4A11. Western Blot analysis of THUMPD1 expression in human kidney.



Immunoperoxidase of monoclonal antibody to THUMPD1 on formalin-fixed paraffin-embedded human placenta. [antibody concentration 3 ug/ml]



Detection limit for recombinant GST tagged THUMPD1 is approximately 0.03ng/ml as a capture antibody.

Please note: All products are 'FOR RESEARCH USE ONLY. NOT FOR USE IN DIAGNOSTIC OR THERAPEUTIC PROCEDURES'.