

# TIAM2 Antibody (monoclonal) (M01)

Mouse monoclonal antibody raised against a partial recombinant TIAM2.  
Catalog # AT4238a

## Product Information

---

<b>Application</b>	WB, IF, E
<b>Primary Accession</b>	<a href="#">Q8IVF5</a>
<b>Other Accession</b>	<a href="#">NM_001010927</a>
<b>Reactivity</b>	Human
<b>Host</b>	mouse
<b>Clonality</b>	monoclonal
<b>Isotype</b>	IgG2a Kappa
<b>Clone Names</b>	3C1
<b>Calculated MW</b>	190103

## Additional Information

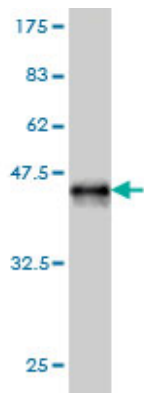
---

<b>Gene ID</b>	26230
<b>Other Names</b>	T-lymphoma invasion and metastasis-inducing protein 2, TIAM-2, SIF and TIAM1-like exchange factor, TIAM2, KIAA2016, STEF
<b>Target/Specificity</b>	TIAM2 (NP_001010927, 527 a.a. ~ 624 a.a) partial recombinant protein with GST tag. MW of the GST tag alone is 26 KDa.
<b>Dilution</b>	WB~~1:500~1000 IF~~1:50~200 E~~N/A
<b>Format</b>	Clear, colorless solution in phosphate buffered saline, pH 7.2 .
<b>Storage</b>	Store at -20°C or lower. Aliquot to avoid repeated freezing and thawing.
<b>Precautions</b>	TIAM2 Antibody (monoclonal) (M01) is for research use only and not for use in diagnostic or therapeutic procedures.

## Images

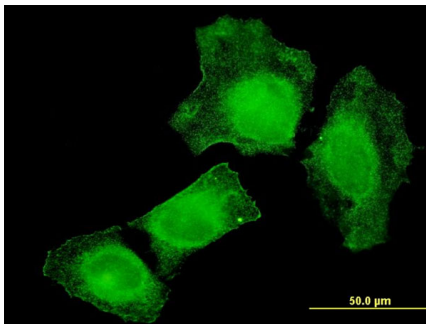
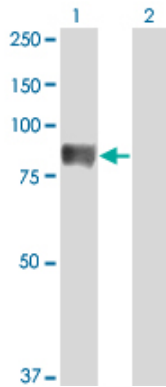
---

Antibody Reactive Against Recombinant Protein.Western Blot detection against Immunogen (36.52 KDa) .

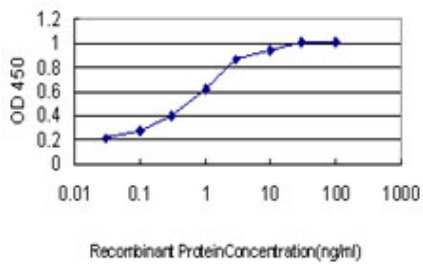


Western Blot analysis of TIAM2 expression in transfected 293T cell line by TIAM2 monoclonal antibody (M01), clone 3C1.

Lane 1: TIAM2 transfected lysate(70.8 KDa).  
Lane 2: Non-transfected lysate.



Immunofluorescence of monoclonal antibody to TIAM2 on HeLa cell . [antibody concentration 10 ug/ml]



Detection limit for recombinant GST tagged TIAM2 is approximately 0.03ng/ml as a capture antibody.

Please note: All products are 'FOR RESEARCH USE ONLY. NOT FOR USE IN DIAGNOSTIC OR THERAPEUTIC PROCEDURES'.