

# TIMM9 Antibody (monoclonal) (M01)

Mouse monoclonal antibody raised against a full length recombinant TIMM9.

Catalog # AT4240a

## Product Information

---

<b>Application</b>	WB, IHC, E
<b>Primary Accession</b>	<a href="#">Q9Y5J7</a>
<b>Other Accession</b>	<a href="#">BC020213</a>
<b>Reactivity</b>	Human, Mouse, Rat
<b>Host</b>	mouse
<b>Clonality</b>	monoclonal
<b>Isotype</b>	IgG2a Kappa
<b>Clone Names</b>	1D6
<b>Calculated MW</b>	10378

## Additional Information

---

<b>Gene ID</b>	26520
<b>Other Names</b>	Mitochondrial import inner membrane translocase subunit Tim9, TIMM9, TIM9, TIM9A, TIMM9A
<b>Target/Specificity</b>	TIMM9 (AAH20213, 1 a.a. ~ 89 a.a) full-length recombinant protein with GST tag. MW of the GST tag alone is 26 KDa.
<b>Dilution</b>	WB~~1:500~1000 IHC~~1:100~500 E~~N/A
<b>Format</b>	Clear, colorless solution in phosphate buffered saline, pH 7.2 .
<b>Storage</b>	Store at -20°C or lower. Aliquot to avoid repeated freezing and thawing.
<b>Precautions</b>	TIMM9 Antibody (monoclonal) (M01) is for research use only and not for use in diagnostic or therapeutic procedures.

## Background

---

TIMM9 belongs to a family of evolutionarily conserved proteins that are organized in heterooligomeric complexes in the mitochondrial intermembrane space. These proteins mediate the import and insertion of hydrophobic membrane proteins into the mitochondrial inner membrane.

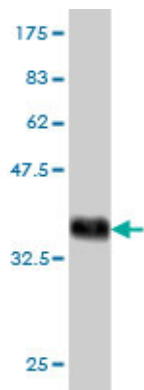
## References

---

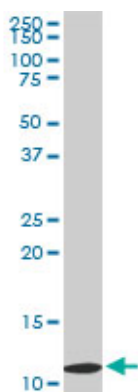
Toward a confocal subcellular atlas of the human proteome. Barbe L, et al. Mol Cell Proteomics, 2008 Mar. PMID 18029348. Crystal structure of the mitochondrial chaperone TIM9.10 reveals a six-bladed alpha-propeller. Webb CT, et al. Mol Cell, 2006 Jan 6. PMID 16387659. The status, quality, and expansion of

the NIH full-length cDNA project: the Mammalian Gene Collection (MGC). Gerhard DS, et al. Genome Res, 2004 Oct. PMID 15489334. Organization and function of the small Tim complexes acting along the import pathway of metabolite carriers into mammalian mitochondria. M?hlenbein N, et al. J Biol Chem, 2004 Apr 2. PMID 14726512. Generation and initial analysis of more than 15,000 full-length human and mouse cDNA sequences. Strausberg RL, et al. Proc Natl Acad Sci U S A, 2002 Dec 24. PMID 12477932.

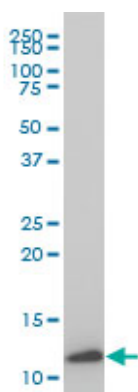
## Images



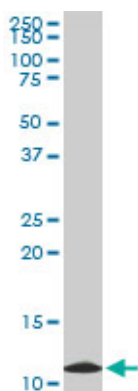
Antibody Reactive Against Recombinant Protein. Western Blot detection against Immunogen (35.53 KDa) .



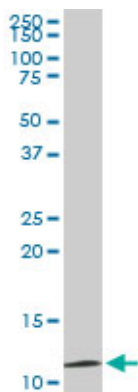
TIMM9 monoclonal antibody (M01), clone 1D6. Western Blot analysis of TIMM9 expression in PC-12 ( (Cat # AT4240a )



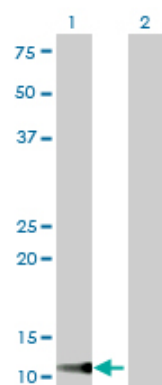
TIMM9 monoclonal antibody (M01), clone 1D6 Western Blot analysis of TIMM9 expression in IMR-32 ( (Cat # AT4240a )



TIMM9 monoclonal antibody (M01), clone 1D6. Western Blot analysis of TIMM9 expression in Raw 264.7 ( (Cat # AT4240a )

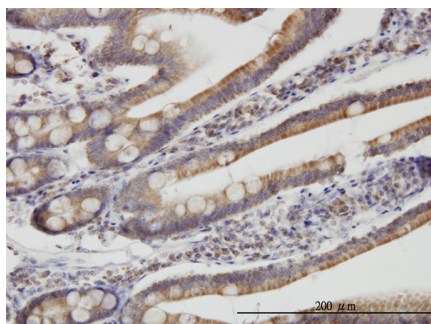


TIMM9 monoclonal antibody (M01), clone 1D6. Western Blot analysis of TIMM9 expression in NIH/3T3 (Cat # AT4240a)

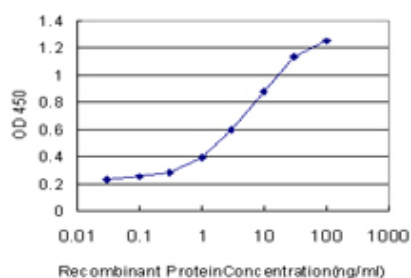


Western Blot analysis of TIMM9 expression in transfected 293T cell line by TIMM9 monoclonal antibody (M01), clone 1D6.

Lane 1: TIMM9 transfected lysate(10.4 KDa).  
Lane 2: Non-transfected lysate.



Immunoperoxidase of monoclonal antibody to TIMM9 on formalin-fixed paraffin-embedded human small Intestine. [antibody concentration 3 ug/ml]



Detection limit for recombinant GST tagged TIMM9 is approximately 0.1 ng/ml as a capture antibody.

Please note: All products are 'FOR RESEARCH USE ONLY. NOT FOR USE IN DIAGNOSTIC OR THERAPEUTIC PROCEDURES'.