

TIMP1 Antibody (monoclonal) (M01)

Mouse monoclonal antibody raised against a full length recombinant TIMP1.

Catalog # AT4241a

Product Information

Application	WB, IP, E
Primary Accession	P01033
Other Accession	BC007097
Reactivity	Human
Host	mouse
Clonality	monoclonal
Isotype	IgG1 Kappa
Clone Names	4D12
Calculated MW	23171

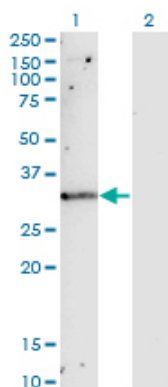
Additional Information

Gene ID	7076
Other Names	Metalloproteinase inhibitor 1, Erythroid-potentiating activity, EPA, Fibroblast collagenase inhibitor, Collagenase inhibitor, Tissue inhibitor of metalloproteinases 1, TIMP-1, TIMP1, CLGI, TIMP
Target/Specificity	TIMP1 (AAH07097, 1 a.a. ~ 169 a.a) full-length recombinant protein with GST tag. MW of the GST tag alone is 26 KDa.
Dilution	WB~~1:500~1000 IP~~N/A E~~N/A
Format	Clear, colorless solution in phosphate buffered saline, pH 7.2 .
Storage	Store at -20°C or lower. Aliquot to avoid repeated freezing and thawing.
Precautions	TIMP1 Antibody (monoclonal) (M01) is for research use only and not for use in diagnostic or therapeutic procedures.

Background

This gene belongs to the TIMP gene family. The proteins encoded by this gene family are natural inhibitors of the matrix metalloproteinases (MMPs), a group of peptidases involved in degradation of the extracellular matrix. In addition to its inhibitory role against most of the known MMPs, the encoded protein is able to promote cell proliferation in a wide range of cell types, and may also have an anti-apoptotic function. Transcription of this gene is highly inducible in response to many cytokines and hormones. In addition, the expression from some but not all inactive X chromosomes suggests that this gene inactivation is polymorphic in human females. This gene is located within intron 6 of the synapsin I gene and is transcribed in the opposite direction. [provided by RefSeq]

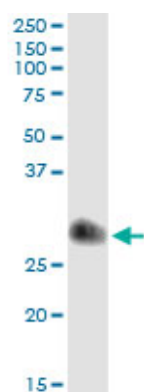
Images



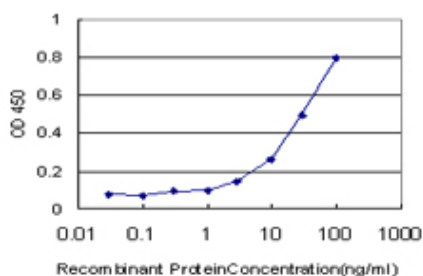
Western Blot analysis of TIMP1 expression in transfected 293T cell line by TIMP1 monoclonal antibody (M01), clone 4D12.

Lane 1: TIMP1 transfected lysate(23.2 KDa).

Lane 2: Non-transfected lysate.



Immunoprecipitation of TIMP1 transfected lysate using anti-TIMP1 monoclonal antibody and Protein A Magnetic Bead ([U0007](#)), and immunoblotted with TIMP1 MaxPab rabbit polyclonal antibody.



Detection limit for recombinant GST tagged TIMP1 is approximately 3ng/ml as a capture antibody.

Please note: All products are 'FOR RESEARCH USE ONLY. NOT FOR USE IN DIAGNOSTIC OR THERAPEUTIC PROCEDURES'.