

TMEFF2 Antibody (monoclonal) (M08)

Mouse monoclonal antibody raised against a partial recombinant TMEFF2.

Catalog # AT4262a

Product Information

Application	WB
Primary Accession	Q9UIK5
Other Accession	NM_016192
Reactivity	Human
Host	Mouse
Clonality	monoclonal
Isotype	IgG2a Kappa
Clone Names	1D12
Calculated MW	41428

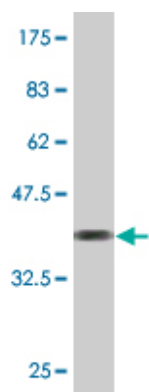
Additional Information

Gene ID	23671
Other Names	Tomoregulin-2, TR-2, Hyperplastic polyposis protein 1, Transmembrane protein with EGF-like and two follistatin-like domains, TMEFF2, HPP1, TENB2, TPEF
Target/Specificity	TMEFF2 (NP_057276.2, 201 a.a. ~ 292 a.a) partial recombinant protein with GST tag. MW of the GST tag alone is 26 KDa.
Dilution	WB~~1:500~1000
Format	Clear, colorless solution in phosphate buffered saline, pH 7.2 .
Storage	Store at -20°C or lower. Aliquot to avoid repeated freezing and thawing.
Precautions	TMEFF2 Antibody (monoclonal) (M08) is for research use only and not for use in diagnostic or therapeutic procedures.

References

Personalized smoking cessation: interactions between nicotine dose, dependence and quit-success genotype score. Rose JE, et al. Mol Med, 2010 Jul-Aug. PMID 20379614.Common genetic variation and the control of HIV-1 in humans. Fellay J, et al. PLoS Genet, 2009 Dec. PMID 20041166.Methylation of CLDN6, FBN2, RBP1, RBP4, TFPI2, and TMEFF2 in esophageal squamous cell carcinoma. Tsunoda S, et al. Oncol Rep, 2009 Apr. PMID 19288010.Coeliac disease-associated risk variants in TNFAIP3 and REL implicate altered NF-kappaB signalling. Trynka G, et al. Gut, 2009 Aug. PMID 19240061.Aberrant promoter methylation of the TPEF gene in esophageal squamous cell carcinoma. Zhao BJ, et al. Dis Esophagus, 2008. PMID 19040536.

Images



Antibody Reactive Against Recombinant Protein. Western Blot detection against Immunogen (35.86 KDa) .

Please note: All products are 'FOR RESEARCH USE ONLY. NOT FOR USE IN DIAGNOSTIC OR THERAPEUTIC PROCEDURES'.