

## TOE1 Antibody (monoclonal) (M02)

Mouse monoclonal antibody raised against a full length recombinant TOE1.

Catalog # AT4297a

### Product Information

---

<b>Application</b>	WB, IHC, IF
<b>Primary Accession</b>	<a href="#">Q96GM8</a>
<b>Other Accession</b>	<a href="#">BC009364</a>
<b>Reactivity</b>	Human
<b>Host</b>	mouse
<b>Clonality</b>	monoclonal
<b>Isotype</b>	IgG1 Kappa
<b>Clone Names</b>	1C12
<b>Calculated MW</b>	56548

### Additional Information

---

<b>Gene ID</b>	114034
<b>Other Names</b>	Target of EGR1 protein 1, TOE1
<b>Target/Specificity</b>	TOE1 (AAH09364, 1 a.a. ~ 510 a.a) full-length recombinant protein with GST tag. MW of the GST tag alone is 26 KDa.
<b>Dilution</b>	WB~~1:500~1000 IHC~~1:100~500 IF~~1:50~200
<b>Format</b>	Clear, colorless solution in phosphate buffered saline, pH 7.2 .
<b>Storage</b>	Store at -20°C or lower. Aliquot to avoid repeated freezing and thawing.
<b>Precautions</b>	TOE1 Antibody (monoclonal) (M02) is for research use only and not for use in diagnostic or therapeutic procedures.

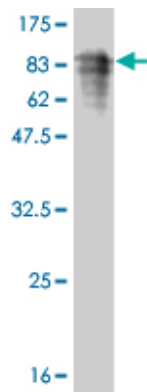
### References

---

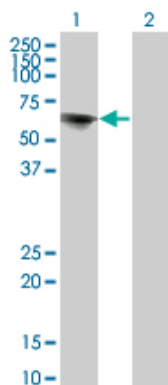
Global, in vivo, and site-specific phosphorylation dynamics in signaling networks. Olsen JV, et al. Cell, 2006 Nov 3. PMID 17081983. The DNA sequence and biological annotation of human chromosome 1. Gregory SG, et al. Nature, 2006 May 18. PMID 16710414. Diversification of transcriptional modulation: large-scale identification and characterization of putative alternative promoters of human genes. Kimura K, et al. Genome Res, 2006 Jan. PMID 16344560. A human protein-protein interaction network: a resource for annotating the proteome. Stelzl U, et al. Cell, 2005 Sep 23. PMID 16169070. The status, quality, and expansion of the NIH full-length cDNA project: the Mammalian Gene Collection (MGC). Gerhard DS, et al. Genome Res, 2004 Oct. PMID 15489334.

### Images

---



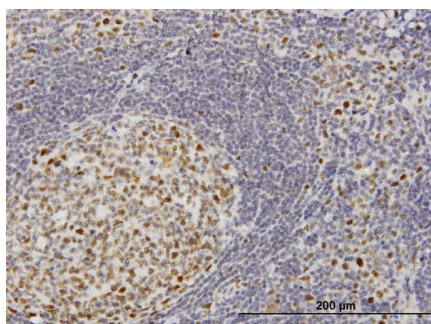
Antibody Reactive Against Recombinant Protein. Western Blot detection against Immunogen (81.84 KDa) .



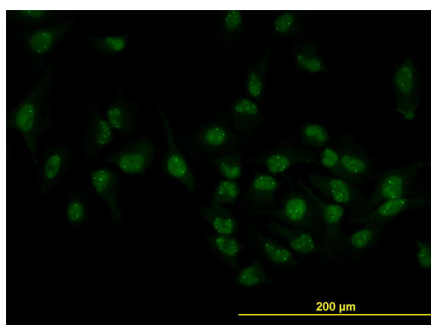
Western Blot analysis of TOE1 expression in transfected 293T cell line by TOE1 monoclonal antibody (M02), clone 1C12.

Lane 1: TOE1 transfected lysate(56.548 KDa).

Lane 2: Non-transfected lysate.



Immunoperoxidase of monoclonal antibody to TOE1 on formalin-fixed paraffin-embedded human tonsil. [antibody concentration 1.5 ug/ml]



Immunofluorescence of monoclonal antibody to TOE1 on HeLa cell. [antibody concentration 10 ug/ml]

Please note: All products are 'FOR RESEARCH USE ONLY. NOT FOR USE IN DIAGNOSTIC OR THERAPEUTIC PROCEDURES'.