

# TOM1 Antibody (monoclonal) (M01)

Mouse monoclonal antibody raised against a partial recombinant TOM1.

Catalog # AT4299a

## Product Information

---

<b>Application</b>	WB, IHC, E
<b>Primary Accession</b>	<a href="#">O60784</a>
<b>Other Accession</b>	<a href="#">NM_005488</a>
<b>Reactivity</b>	Human
<b>Host</b>	mouse
<b>Clonality</b>	monoclonal
<b>Isotype</b>	IgG1 Kappa
<b>Clone Names</b>	5A3
<b>Calculated MW</b>	53818

## Additional Information

---

<b>Gene ID</b>	10043
<b>Other Names</b>	Target of Myb protein 1, TOM1
<b>Target/Specificity</b>	TOM1 (NP_005479, 394 a.a. ~ 491 a.a) partial recombinant protein with GST tag. MW of the GST tag alone is 26 KDa.
<b>Dilution</b>	WB~~1:500~1000 IHC~~1:100~500 E~~N/A
<b>Format</b>	Clear, colorless solution in phosphate buffered saline, pH 7.2 .
<b>Storage</b>	Store at -20°C or lower. Aliquot to avoid repeated freezing and thawing.
<b>Precautions</b>	TOM1 Antibody (monoclonal) (M01) is for research use only and not for use in diagnostic or therapeutic procedures.

## Background

---

This gene was identified as a target of the v-myb oncogene. The encoded protein shares its N-terminal domain in common with proteins associated with vesicular trafficking at the endosome. It is recruited to the endosomes by its interaction with endofin. Several alternatively spliced transcript variants encoding different isoforms have been found for this gene.

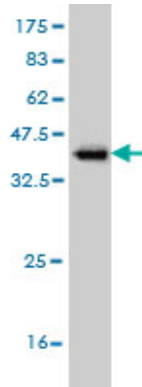
## References

---

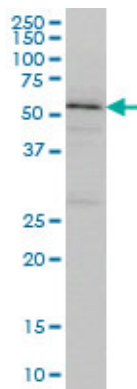
miR-126 is downregulated in cystic fibrosis airway epithelial cells and regulates TOM1 expression. Oglesby IK, et al. J Immunol, 2010 Feb 15. PMID 20083669. Toward a confocal subcellular atlas of the human proteome. Barbe L, et al. Mol Cell Proteomics, 2008 Mar. PMID 18029348. Gene-based SNP mapping of a

psychotic bipolar affective disorder linkage region on 22q12.3: association with HMG2L1 and TOM1. Potash JB, et al. *Am J Med Genet B Neuropsychiatr Genet*, 2008 Jan 5. PMID 17671966. Intracellular trafficking of interleukin-1 receptor I requires Tollip. Brissoni B, et al. *Curr Biol*, 2006 Nov 21. PMID 17113392. Global, in vivo, and site-specific phosphorylation dynamics in signaling networks. Olsen JV, et al. *Cell*, 2006 Nov 3. PMID 17081983.

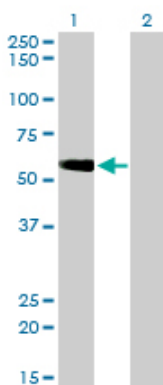
## Images



Antibody Reactive Against Recombinant Protein. Western Blot detection against Immunogen (36.52 kDa) .

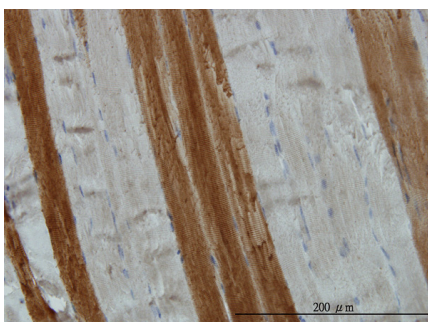


TOM1 monoclonal antibody (M01), clone 5A3 Western Blot analysis of TOM1 expression in K-562 ( (Cat # AT4299a )



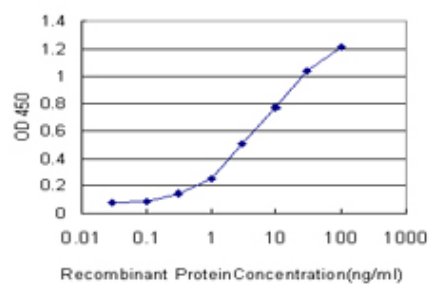
Western Blot analysis of TOM1 expression in transfected 293T cell line by TOM1 monoclonal antibody (M01), clone 5A3.

Lane 1: TOM1 transfected lysate(53.8 kDa).  
Lane 2: Non-transfected lysate.



Immunoperoxidase of monoclonal antibody to TOM1 on formalin-fixed paraffin-embedded human skeletal muscle. [antibody concentration 3 ug/ml]

Detection limit for recombinant GST tagged TOM1 is



approximately 0.3ng/ml as a capture antibody.

Please note: All products are 'FOR RESEARCH USE ONLY. NOT FOR USE IN DIAGNOSTIC OR THERAPEUTIC PROCEDURES'.