

# TOMM22 Antibody (monoclonal) (M01)

Mouse monoclonal antibody raised against a full length recombinant TOMM22.

Catalog # AT4302a

## Product Information

---

<b>Application</b>	WB, IHC, IF, E
<b>Primary Accession</b>	<a href="#">Q9NS69</a>
<b>Other Accession</b>	<a href="#">BC009363</a>
<b>Reactivity</b>	Human, Mouse, Rat
<b>Host</b>	mouse
<b>Clonality</b>	monoclonal
<b>Isotype</b>	IgG2a Kappa
<b>Clone Names</b>	4G4
<b>Calculated MW</b>	15522

## Additional Information

---

<b>Gene ID</b>	56993
<b>Other Names</b>	Mitochondrial import receptor subunit TOM22 homolog, hTom22, 1C9-2, Translocase of outer membrane 22 kDa subunit homolog, TOMM22, TOM22
<b>Target/Specificity</b>	TOMM22 (AAH09363, 1 a.a. ~ 142 a.a) full-length recombinant protein with GST tag. MW of the GST tag alone is 26 KDa.
<b>Dilution</b>	WB~~1:500~1000 IHC~~1:100~500 IF~~1:50~200 E~~N/A
<b>Format</b>	Clear, colorless solution in phosphate buffered saline, pH 7.2 .
<b>Storage</b>	Store at -20°C or lower. Aliquot to avoid repeated freezing and thawing.
<b>Precautions</b>	TOMM22 Antibody (monoclonal) (M01) is for research use only and not for use in diagnostic or therapeutic procedures.

## Background

---

The protein encoded by this gene is an integral membrane protein of the mitochondrial outer membrane. The encoded protein interacts with TOMM20 and TOMM40, and forms a complex with several other proteins to import cytosolic preproteins into the mitochondrion.

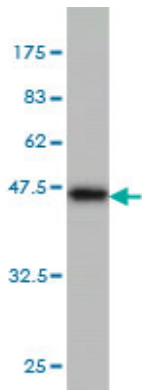
## References

---

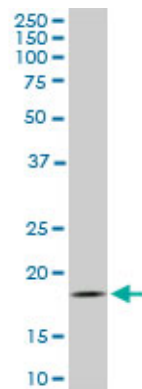
Toward a confocal subcellular atlas of the human proteome. Barbe L, et al. Mol Cell Proteomics, 2008 Mar. PMID 18029348. The mitochondrial TOM complex is required for tBid/Bax-induced cytochrome c release. Ott M, et al. J Biol Chem, 2007 Sep 21. PMID 17635912. TOM22, a core component of the mitochondria outer

membrane protein translocation pore, is a mitochondrial receptor for the proapoptotic protein Bax. Bellot G, et al. Cell Death Differ, 2007 Apr. PMID 17096026.Global, in vivo, and site-specific phosphorylation dynamics in signaling networks. Olsen JV, et al. Cell, 2006 Nov 3. PMID 17081983.Identification of intrahepatic cholangiocarcinoma related genes by comparison with normal liver tissues using expressed sequence tags. Wang AG, et al. Biochem Biophys Res Commun, 2006 Jul 7. PMID 16712791.

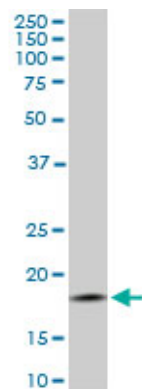
Images



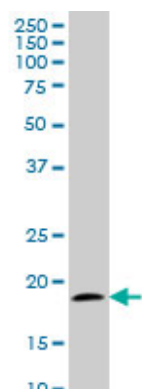
Antibody Reactive Against Recombinant Protein.Western Blot detection against Immunogen (41.36 KDa) .



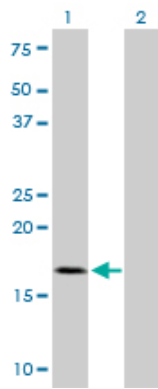
TOMM22 monoclonal antibody (M01), clone 4G4. Western Blot analysis of TOMM22 expression in PC-12 ( (Cat # AT4302a )



TOMM22 monoclonal antibody (M01), clone 4G4. Western Blot analysis of TOMM22 expression in Raw 264.7 ( (Cat # AT4302a )

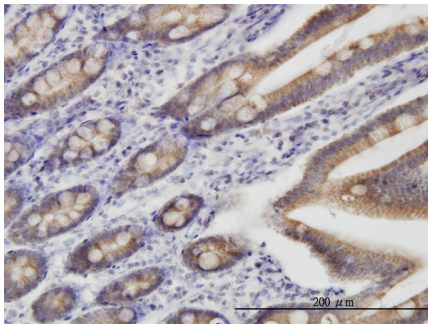


TOMM22 monoclonal antibody (M01), clone 4G4 Western Blot analysis of TOMM22 expression in NIH/3T3 ( (Cat # AT4302a )

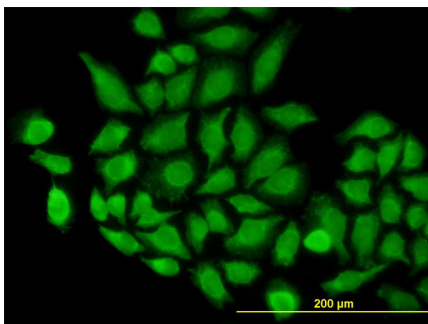


Western Blot analysis of TOMM22 expression in transfected 293T cell line by TOMM22 monoclonal antibody (M01), clone 4G4.

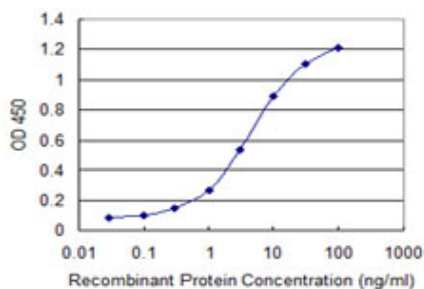
Lane 1: TOMM22 transfected lysate(15.5 kDa).  
Lane 2: Non-transfected lysate.



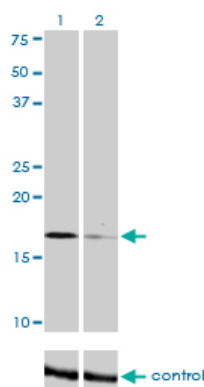
Immunoperoxidase of monoclonal antibody to TOMM22 on formalin-fixed paraffin-embedded human small Intestine. [antibody concentration 3 ug/ml]



Immunofluorescence of monoclonal antibody to TOMM22 on HeLa cell. [antibody concentration 10 ug/ml]



Detection limit for recombinant GST tagged TOMM22 is 0.1 ng/ml as a capture antibody.



Western blot analysis of TOMM22 over-expressed 293 cell line, cotransfected with TOMM22 Validated Chimera RNAi ( Cat # H00056993-R01V ) (Lane 2) or non-transfected control (Lane 1). Blot probed with TOMM22 monoclonal antibody (M01), clone 4G4 (Cat # AT4302a ). GAPDH ( 36.1 kDa ) used as specificity and loading control.