

# TOP1 Antibody (monoclonal) (M01)

Mouse monoclonal antibody raised against a partial recombinant TOP1.

Catalog # AT4304a

## Product Information

---

<b>Application</b>	WB, IHC, E
<b>Primary Accession</b>	<a href="#">P11387</a>
<b>Other Accession</b>	<a href="#">NM_003286</a>
<b>Reactivity</b>	Human
<b>Host</b>	Mouse
<b>Clonality</b>	monoclonal
<b>Isotype</b>	IgG1 Kappa
<b>Clone Names</b>	1A1
<b>Calculated MW</b>	90726

## Additional Information

---

<b>Gene ID</b>	7150
<b>Other Names</b>	DNA topoisomerase 1, DNA topoisomerase I, TOP1
<b>Target/Specificity</b>	TOP1 (NP_003277, 692 a.a. ~ 765 a.a) partial recombinant protein with GST tag. MW of the GST tag alone is 26 KDa.
<b>Dilution</b>	WB~~1:500~1000 IHC~~1:100~500 E~~N/A
<b>Format</b>	Clear, colorless solution in phosphate buffered saline, pH 7.2 .
<b>Storage</b>	Store at -20°C or lower. Aliquot to avoid repeated freezing and thawing.
<b>Precautions</b>	TOP1 Antibody (monoclonal) (M01) is for research use only and not for use in diagnostic or therapeutic procedures.

## Background

---

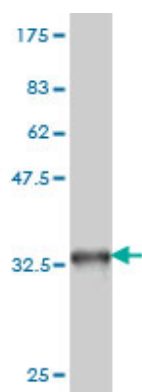
This gene encodes a DNA topoisomerase, an enzyme that controls and alters the topologic states of DNA during transcription. This enzyme catalyzes the transient breaking and rejoining of a single strand of DNA which allows the strands to pass through one another, thus altering the topology of DNA. This gene is localized to chromosome 20 and has pseudogenes which reside on chromosomes 1 and 22.

## References

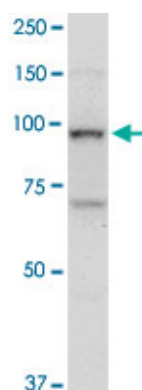
---

1.AID-induced decrease in topoisomerase 1 induces DNA structural alteration and DNA cleavage for class switch recombination.Kobayashi M, Aida M, Nagaoka H, Begum NA, Kitawaki Y, Nakata M, Stanlie A, Doi T, Kato L, Okazaki IM, Shinkura R, Muramatsu M, Kinoshita K, Honjo T.Proc Natl Acad Sci U S A. 2009 Dec

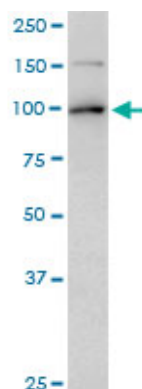
## Images



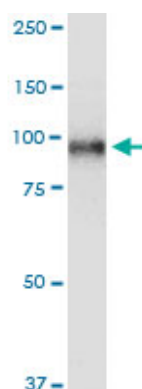
Antibody Reactive Against Recombinant Protein. Western Blot detection against Immunogen (33.88 KDa) .



TOP1 monoclonal antibody (M01), clone 1A1. Western Blot analysis of TOP1 expression in human ovarian cancer.

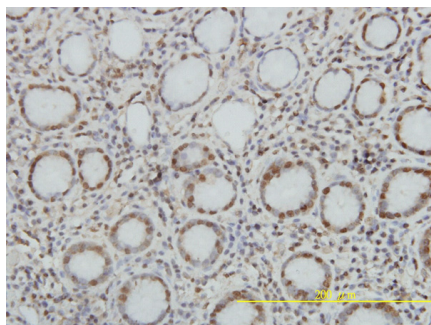
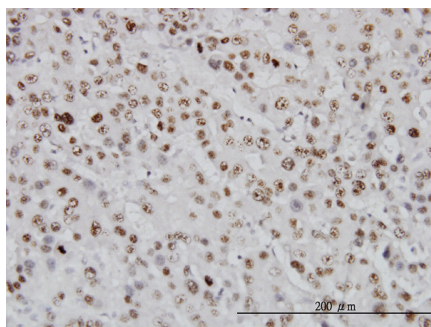


TOP1 monoclonal antibody (M01), clone 1A1. Western Blot analysis of TOP1 expression in HeLa.

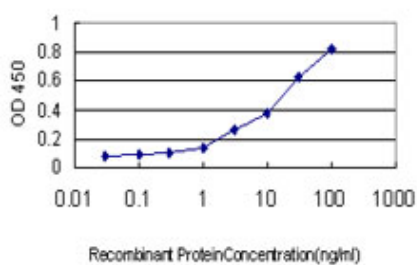


TOP1 monoclonal antibody (M01), clone 1A1. Western Blot analysis of TOP1 expression in JAR.

Immunoperoxidase of monoclonal antibody to TOP1 on formalin-fixed paraffin-embedded human hepatocellular carcinoma. [antibody concentration 3 ug/ml]



Immunoperoxidase of monoclonal antibody to TOP1 on formalin-fixed paraffin-embedded human stomach. [antibody concentration 1~10 ug/ml]



Detection limit for recombinant GST tagged TOP1 is approximately 0.3ng/ml as a capture antibody.

Please note: All products are 'FOR RESEARCH USE ONLY. NOT FOR USE IN DIAGNOSTIC OR THERAPEUTIC PROCEDURES'.