

TP53BP1 Antibody (monoclonal) (M01)

Mouse monoclonal antibody raised against a partial recombinant TP53BP1.

Catalog # AT4311a

Product Information

Application	E
Primary Accession	Q12888
Other Accession	NM_005657
Reactivity	Human
Host	mouse
Clonality	monoclonal
Isotype	IgG1 Kappa
Clone Names	1B9
Calculated MW	213574

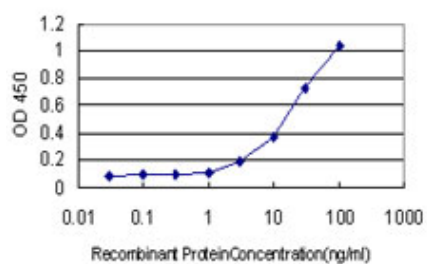
Additional Information

Gene ID	7158
Other Names	Tumor suppressor p53-binding protein 1, 53BP1, p53-binding protein 1, p53BP1, TP53BP1
Target/Specificity	TP53BP1 (NP_005648, 1766 a.a. ~ 1874 a.a) partial recombinant protein with GST tag. MW of the GST tag alone is 26 KDa.
Dilution	E~~N/A
Format	Clear, colorless solution in phosphate buffered saline, pH 7.2 .
Storage	Store at -20°C or lower. Aliquot to avoid repeated freezing and thawing.
Precautions	TP53BP1 Antibody (monoclonal) (M01) is for research use only and not for use in diagnostic or therapeutic procedures.

References

Genetic Variants in the 53BP1 Gene and Skin Cancer Risk. He C, et al. J Invest Dermatol, 2010 Aug 5. PMID 20686496. Evaluation of Single Nucleotide Polymorphisms (SNPs) in the p53 Binding Protein 1 (TP53BP1) Gene in Breast Cancer Patients Treated With Breast-Conserving Surgery and Whole-Breast Irradiation (BCS + RT). Haffty BG, et al. Int J Radiat Oncol Biol Phys, 2010 Jun 18. PMID 20646866. A large-scale candidate gene approach identifies SNPs in SOD2 and IL13 as predictive markers of response to preoperative chemoradiation in rectal cancer. Ho-Pun-Cheung A, et al. Pharmacogenomics J, 2010 Jul 20. PMID 20644561. 53BP1 loss rescues BRCA1 deficiency and is associated with triple-negative and BRCA-mutated breast cancers. Bouwman P, et al. Nat Struct Mol Biol, 2010 Jun. PMID 20453858. A Large-scale genetic association study of esophageal adenocarcinoma risk. Liu CY, et al. Carcinogenesis, 2010 Jul. PMID

Images



Detection limit for recombinant GST tagged TP53BP1 is approximately 0.1 ng/ml as a capture antibody.

Please note: All products are 'FOR RESEARCH USE ONLY. NOT FOR USE IN DIAGNOSTIC OR THERAPEUTIC PROCEDURES'.