

TPI1 Antibody (monoclonal) (M01)

Mouse monoclonal antibody raised against a full length recombinant TPI1.

Catalog # AT4318a

Product Information

Application	WB, E
Primary Accession	P60174
Other Accession	BC007086
Reactivity	Human
Host	mouse
Clonality	monoclonal
Isotype	IgG1 Kappa
Clone Names	1D10-2E2
Calculated MW	26669

Additional Information

Gene ID	7167
Other Names	Triosephosphate isomerase, TIM, Triose-phosphate isomerase, TPI1, TPI
Target/Specificity	TPI1 (AAH07086.1, 1 a.a. ~ 249 a.a) full-length recombinant protein with GST tag. MW of the GST tag alone is 26 KDa.
Dilution	WB~~1:500~1000 E~~N/A
Format	Clear, colorless solution in phosphate buffered saline, pH 7.2 .
Storage	Store at -20°C or lower. Aliquot to avoid repeated freezing and thawing.
Precautions	TPI1 Antibody (monoclonal) (M01) is for research use only and not for use in diagnostic or therapeutic procedures.

Background

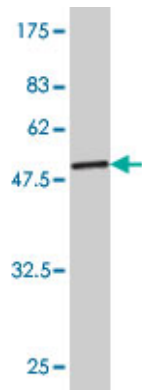
This gene encodes an enzyme, consisting of two identical proteins, which catalyzes the isomerization of glyceraldehydes 3-phosphate (G3P) and dihydroxy-acetone phosphate (DHAP) in glycolysis and gluconeogenesis. Mutations in this gene are associated with triosephosphate isomerase deficiency. Pseudogenes have been identified on chromosomes 1, 4, 6 and 7. Alternative splicing results in multiple transcript variants.

References

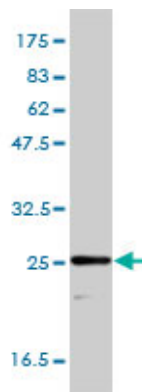
1.Impact of cisplatin administration on protein expression levels in renal cell carcinoma: A proteomic analysis.Vasko R, Mueller GA, von Jaschke AK, Asif AR, Dihazi H.Eur J Pharmacol. 2011 Sep 8.2.Proteomic

Analysis of Butyrate Effects and Loss of Butyrate Sensitivity in HT29 Colorectal Cancer Cells.Fung KY, Lewanowitsch T, Henderson ST, Priebe I, Hoffmann P, Lockett T, Head R, Cosgrove LJ.J Proteome Res. 2009 Mar;8(3):1220-7.3.Proteome of human T lymphocytes with treatment of cyclosporine and polysaccharopeptide: Analysis of significant proteins that manipulate T cells proliferation and immunosuppression.Lee CL, Jiang PP, Sit WH, Wan JM.Int Immunopharmacol. 2007 Oct;7(10):1311-24. Epub 2007 Jun 19.

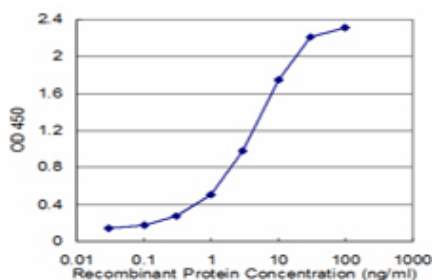
Images



Antibody Reactive Against Recombinant Protein.Western Blot detection against Immunogen (53.13 KDa) .



TPI1 monoclonal antibody (M01), clone 1D10-2E2
Western Blot analysis of TPI1 expression in HepG2 ((Cat # AT4318a)



Detection limit for recombinant GST tagged TPI1 is approximately 0.3ng/ml as a capture antibody.

Please note: All products are 'FOR RESEARCH USE ONLY. NOT FOR USE IN DIAGNOSTIC OR THERAPEUTIC PROCEDURES'.