

TRD@ Antibody (monoclonal) (M01)

Mouse monoclonal antibody raised against a partial recombinant TRD@.

Catalog # AT4335a

Product Information

Application	WB, E
Primary Accession	B7Z8K6
Other Accession	X06557
Reactivity	Human
Host	mouse
Clonality	monoclonal
Isotype	IgG1 Kappa
Clone Names	2H6
Calculated MW	17085

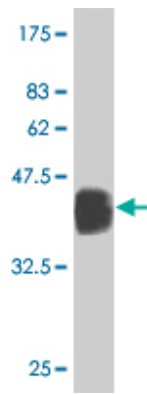
Additional Information

Other Names	T-cell receptor delta chain C region, TRDC
Target/Specificity	TRD@ (CAA29800, 173 a.a. ~ 272 a.a) partial recombinant protein with GST tag. MW of the GST tag alone is 26 KDa.
Dilution	WB~~1:500~1000 E~~N/A
Format	Clear, colorless solution in phosphate buffered saline, pH 7.2 .
Storage	Store at -20°C or lower. Aliquot to avoid repeated freezing and thawing.
Precautions	TRD@ Antibody (monoclonal) (M01) is for research use only and not for use in diagnostic or therapeutic procedures.

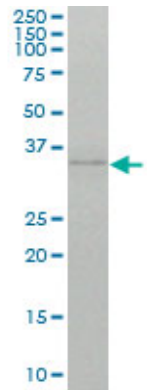
References

Partial and ineffective activation of V gamma 9V delta 2 T cells by Mycobacterium tuberculosis-infected dendritic cells. Meraviglia S, et al. J Immunol, 2010 Aug 1. PMID 20592281. Prolonged antigen survival and cytosolic export in cross-presenting human gammadelta T cells. Meuter S, et al. Proc Natl Acad Sci U S A, 2010 May 11. PMID 20413723. The recognition of gammadelta TCR to protein antigen does not depend on the hydrophobic I97 residue of CDR3delta. Xi X, et al. Int Immunol, 2010 Apr. PMID 20181655. Human gamma delta T cells: a lymphoid lineage cell capable of professional phagocytosis. Wu Y, et al. J Immunol, 2009 Nov 1. PMID 19843947. TCRJ and BCRJ gene segments contain 5' D-segment sequences that contribute to repertoire diversity. Reardon CL. Immunogenetics, 2009 Oct. PMID 19756574.

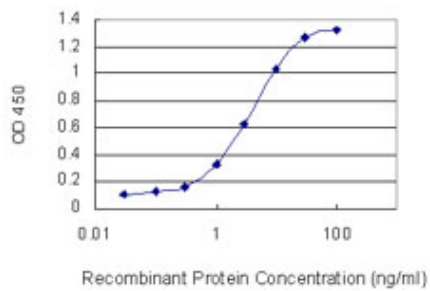
Images



Antibody Reactive Against Recombinant Protein. Western Blot detection against Immunogen (36.74 KDa) .



TRD@ monoclonal antibody (M01), clone 2H6 Western Blot analysis of TRD@ expression in HeLa S3 NE (Cat # AT4335a)



Detection limit for recombinant GST tagged TRD@ is 0.03 ng/ml as a capture antibody.

Please note: All products are 'FOR RESEARCH USE ONLY. NOT FOR USE IN DIAGNOSTIC OR THERAPEUTIC PROCEDURES'.