

TREM1 Antibody (monoclonal) (M01)

Mouse monoclonal antibody raised against a full length recombinant TREM1.

Catalog # AT4336a

Product Information

Application	WB, E
Primary Accession	Q9NP99
Other Accession	BC017773
Reactivity	Human
Host	mouse
Clonality	monoclonal
Isotype	IgG2b Kappa
Clone Names	3F5
Calculated MW	26387

Additional Information

Gene ID	54210
Other Names	Triggering receptor expressed on myeloid cells 1, TREM-1, Triggering receptor expressed on monocytes 1, CD354, TREM1
Target/Specificity	TREM1 (AAH17773.1, 21 a.a. ~ 234 a.a) full-length recombinant protein with GST tag. MW of the GST tag alone is 26 KDa.
Dilution	WB~~1:500~1000 E~~N/A
Format	Clear, colorless solution in phosphate buffered saline, pH 7.2 .
Storage	Store at -20°C or lower. Aliquot to avoid repeated freezing and thawing.
Precautions	TREM1 Antibody (monoclonal) (M01) is for research use only and not for use in diagnostic or therapeutic procedures.

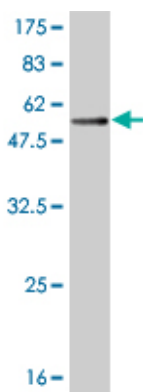
Background

Monocyte/macrophage- and neutrophil-mediated inflammatory responses can be stimulated through a variety of receptors, including G protein-linked 7-transmembrane receptors (e.g., FPR1; MIM 136537), Fc receptors (see MIM 146790), CD14 (MIM 158120) and Toll-like receptors (e.g., TLR4; MIM 603030), and cytokine receptors (e.g., IFNGR1; MIM 107470). Engagement of these receptors can also prime myeloid cells to respond to other stimuli. Myeloid cells express receptors belonging to the Ig superfamily, such as TREM1, or to the C-type lectin superfamily. Depending on their transmembrane and cytoplasmic sequence structure, these receptors have either activating (e.g., KIR2DS1; MIM 604952) or inhibitory functions (e.g., KIR2DL1; MIM 604936).

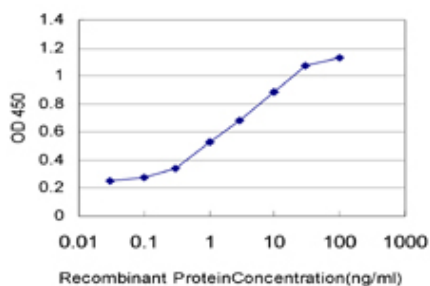
References

Variation at the NFATC2 Locus Increases the Risk of Thiazolinedinedione-Induced Edema in the Diabetes REduction Assessment with ramipril and rosiglitazone Medication (DREAM) Study. Bailey SD, et al. Diabetes Care, 2010 Jul 13. PMID 20628086. Signaling pathways of the TREM-1- and TLR4-mediated neutrophil oxidative burst. Haselmayer P, et al. J Innate Immun, 2009 Oct. PMID 20375613. New genetic associations detected in a host response study to hepatitis B vaccine. Davila S, et al. Genes Immun, 2010 Apr. PMID 20237496. Elevated serum concentrations of triggering receptor expressed on myeloid cells-1 in diffuse cutaneous systemic sclerosis: association with severity of pulmonary fibrosis. Tomita H, et al. J Rheumatol, 2010 Apr. PMID 20156945. Serum levels of soluble triggering receptor expressed on myeloid cells-1 (sTREM-1) and pentraxin 3 (PTX3) as markers of infection in febrile patients with systemic lupus erythematosus. Kim J, et al. Clin Exp Rheumatol, 2009 Sep-Oct. PMID 19917159.

Images



Antibody Reactive Against Recombinant Protein. Western Blot detection against Immunogen (49.28 KDa) .



Detection limit for recombinant GST tagged TREM1 is approximately 0.1 ng/ml as a capture antibody.

Please note: All products are 'FOR RESEARCH USE ONLY. NOT FOR USE IN DIAGNOSTIC OR THERAPEUTIC PROCEDURES'.