

# TRIM28 Antibody (monoclonal) (M01)

Mouse monoclonal antibody raised against a partial recombinant TRIM28.

Catalog # AT4348a

## Product Information

---

<b>Application</b>	WB, IHC, IF
<b>Primary Accession</b>	<a href="#">Q13263</a>
<b>Other Accession</b>	<a href="#">BC004978</a>
<b>Reactivity</b>	Human, Mouse, Rat
<b>Host</b>	Mouse
<b>Clonality</b>	monoclonal
<b>Isotype</b>	IgG2b Kappa
<b>Clone Names</b>	4E7
<b>Calculated MW</b>	88550

## Additional Information

---

<b>Gene ID</b>	10155
<b>Other Names</b>	Transcription intermediary factor 1-beta, TIF1-beta, E3 SUMO-protein ligase TRIM28, 632-, KRAB-associated protein 1, KAP-1, KRAB-interacting protein 1, KRIP-1, Nuclear corepressor KAP-1, RING finger protein 96, Tripartite motif-containing protein 28, TRIM28, KAP1, RNF96, TIF1B
<b>Target/Specificity</b>	TRIM28 (AAH04978, 379 a.a. ~ 524 a.a) partial recombinant protein with GST tag. MW of the GST tag alone is 26 KDa.
<b>Dilution</b>	WB~~1:500~1000 IHC~~1:100~500 IF~~1:50~200
<b>Format</b>	Clear, colorless solution in phosphate buffered saline, pH 7.2 .
<b>Storage</b>	Store at -20°C or lower. Aliquot to avoid repeated freezing and thawing.
<b>Precautions</b>	TRIM28 Antibody (monoclonal) (M01) is for research use only and not for use in diagnostic or therapeutic procedures.

## Background

---

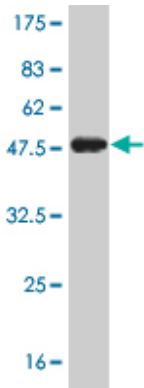
The protein encoded by this gene mediates transcriptional control by interaction with the Kruppel-associated box repression domain found in many transcription factors. The protein localizes to the nucleus and is thought to associate with specific chromatin regions. The protein is a member of the tripartite motif family. This tripartite motif includes three zinc-binding domains, a RING, a B-box type 1 and a B-box type 2, and a coiled-coil region.

## References

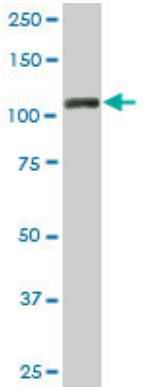
---

1.Multipotent Adult Germline Stem Cells and Embryonic Stem Cells Functional Proteomics Revealed an Important Role of Eukaryotic Initiation Factor 5A (Eif5a) in Stem Cell Differentiation.Dihazi H, Dihazi GH, Jahn O, Meyer S, Nolte J, Asif AR, Mueller GA, Engel W.J Proteome Res. 2011 Feb 24. [Epub ahead of print]

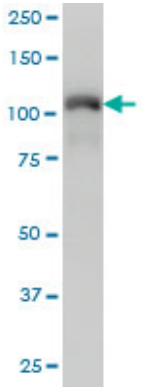
Images



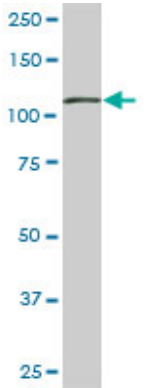
Antibody Reactive Against Recombinant Protein.Western Blot detection against Immunogen (41.69 KDa) .



TRIM28 monoclonal antibody (M01), clone 4E6. Western Blot analysis of TRIM28 expression in PC-12 ( (Cat # AT4348a )

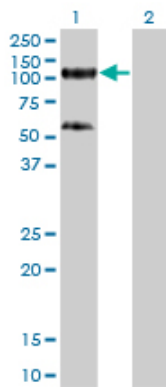


TRIM28 monoclonal antibody (M01), clone 4E6 Western Blot analysis of TRIM28 expression in Hela S3 NE ( (Cat # AT4348a )



TRIM28 monoclonal antibody (M01), clone 4E6. Western Blot analysis of TRIM28 expression in NIH/3T3 ( (Cat # AT4348a )

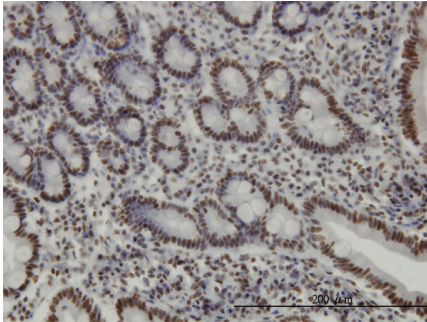
Western Blot analysis of TRIM28 expression in



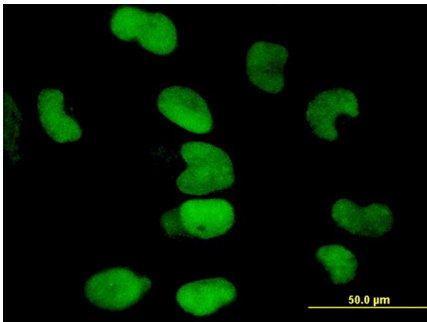
transfected 293T cell line by TRIM28 monoclonal antibody (M01), clone 4E6.

Lane 1: TRIM28 transfected lysate(88.5 KDa).

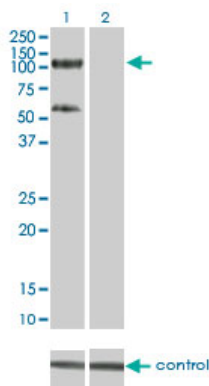
Lane 2: Non-transfected lysate.



Immunoperoxidase of monoclonal antibody to TRIM28 on formalin-fixed paraffin-embedded human small Intestine. [antibody concentration 3 ug/ml]



Immunofluorescence of monoclonal antibody to TRIM28 on HeLa cell. [antibody concentration 10 ug/ml]



Western blot analysis of TRIM28 over-expressed 293 cell line, cotransfected with TRIM28 Validated Chimera RNAi (Cat # AT4348a )

Please note: All products are 'FOR RESEARCH USE ONLY. NOT FOR USE IN DIAGNOSTIC OR THERAPEUTIC PROCEDURES'.