

TROVE2 Antibody (monoclonal) (M01)

Mouse monoclonal antibody raised against a partial recombinant TROVE2.

Catalog # AT4365a

Product Information

Application	WB, E
Primary Accession	P10155
Other Accession	NM_004600
Reactivity	Human
Host	mouse
Clonality	monoclonal
Isotype	IgG2a Kappa
Clone Names	2B4
Calculated MW	60671

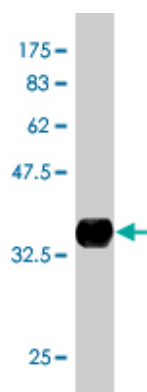
Additional Information

Gene ID	6738
Other Names	60 kDa SS-A/Ro ribonucleoprotein, 60 kDa Ro protein, 60 kDa ribonucleoprotein Ro, RoRNP, Ro 60 kDa autoantigen, Sjogren syndrome antigen A2, Sjogren syndrome type A antigen, SS-A, TROVE domain family member 2, TROVE2, RO60, SSA2
Target/Specificity	TROVE2 (NP_004591, 1 a.a. ~ 100 a.a) partial recombinant protein with GST tag. MW of the GST tag alone is 26 KDa.
Dilution	WB~~1:500~1000 E~~N/A
Format	Clear, colorless solution in phosphate buffered saline, pH 7.2 .
Storage	Store at -20°C or lower. Aliquot to avoid repeated freezing and thawing.
Precautions	TROVE2 Antibody (monoclonal) (M01) is for research use only and not for use in diagnostic or therapeutic procedures.

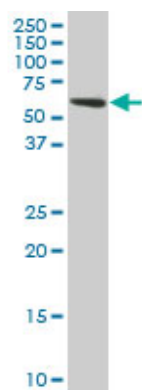
References

New genetic associations detected in a host response study to hepatitis B vaccine. Davila S, et al. Genes Immun, 2010 Apr. PMID 20237496. Reactivity with dichotomous determinants of Ro 60 stratifies autoantibody responses in lupus and primary Sjogren's syndrome. Reed JH, et al. Arthritis Rheum, 2010 May. PMID 20131295. Ro60-associated single-stranded RNA links inflammation with fetal cardiac fibrosis via ligation of TLRs: a novel pathway to autoimmune-associated heart block. Clancy RM, et al. J Immunol, 2010 Feb 15. PMID 20089705. Ro 60 functions as a receptor for beta(2)-glycoprotein I on apoptotic cells. Reed JH, et al. Arthritis Rheum, 2009 Mar. PMID 19248095. Human Y5 RNA specializes a Ro ribonucleoprotein for 5S

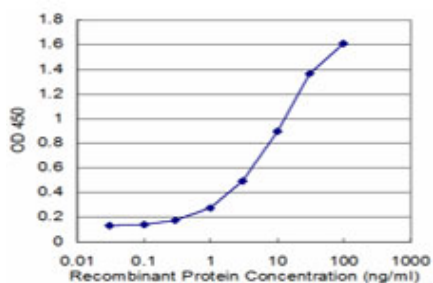
Images



Antibody Reactive Against Recombinant Protein. Western Blot detection against Immunogen (36.74 KDa) .



TROVE2 monoclonal antibody (M01), clone 2B4. Western Blot analysis of TROVE2 expression in HeLa (Cat # AT4365a)



Detection limit for recombinant GST tagged TROVE2 is approximately 0.3ng/ml as a capture antibody.

Please note: All products are 'FOR RESEARCH USE ONLY. NOT FOR USE IN DIAGNOSTIC OR THERAPEUTIC PROCEDURES'.