

## TROVE2 Antibody (monoclonal) (M03)

Mouse monoclonal antibody raised against a partial recombinant TROVE2.

Catalog # AT4366a

### Product Information

---

<b>Application</b>	WB, IF, E
<b>Primary Accession</b>	<a href="#">P10155</a>
<b>Other Accession</b>	<a href="#">NM_004600</a>
<b>Reactivity</b>	Human
<b>Host</b>	Mouse
<b>Clonality</b>	monoclonal
<b>Isotype</b>	IgG2a Kappa
<b>Clone Names</b>	1F2
<b>Calculated MW</b>	60671

### Additional Information

---

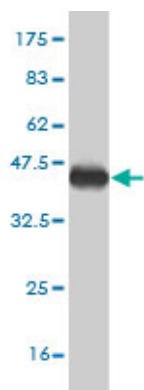
<b>Gene ID</b>	6738
<b>Other Names</b>	60 kDa SS-A/Ro ribonucleoprotein, 60 kDa Ro protein, 60 kDa ribonucleoprotein Ro, RoRNP, Ro 60 kDa autoantigen, Sjogren syndrome antigen A2, Sjogren syndrome type A antigen, SS-A, TROVE domain family member 2, TROVE2, RO60, SSA2
<b>Target/Specificity</b>	TROVE2 (NP_004591, 1 a.a. ~ 100 a.a) partial recombinant protein with GST tag. MW of the GST tag alone is 26 KDa.
<b>Dilution</b>	WB~~1:500~1000 IF~~1:50~200 E~~N/A
<b>Format</b>	Clear, colorless solution in phosphate buffered saline, pH 7.2 .
<b>Storage</b>	Store at -20°C or lower. Aliquot to avoid repeated freezing and thawing.
<b>Precautions</b>	TROVE2 Antibody (monoclonal) (M03) is for research use only and not for use in diagnostic or therapeutic procedures.

### References

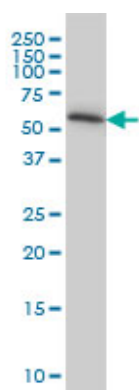
---

New genetic associations detected in a host response study to hepatitis B vaccine. Davila S, et al. Genes Immun, 2010 Apr. PMID 20237496.Reactivity with dichotomous determinants of Ro 60 stratifies autoantibody responses in lupus and primary Sjogren's syndrome. Reed JH, et al. Arthritis Rheum, 2010 May. PMID 20131295.Ro60-associated single-stranded RNA links inflammation with fetal cardiac fibrosis via ligation of TLRs: a novel pathway to autoimmune-associated heart block. Clancy RM, et al. J Immunol, 2010 Feb 15. PMID 20089705.Ro 60 functions as a receptor for beta(2)-glycoprotein I on apoptotic cells. Reed JH, et al. Arthritis Rheum, 2009 Mar. PMID 19248095.Human Y5 RNA specializes a Ro ribonucleoprotein for 5S

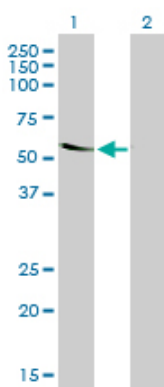
## Images



Antibody Reactive Against Recombinant Protein. Western Blot detection against Immunogen (36.74 KDa) .

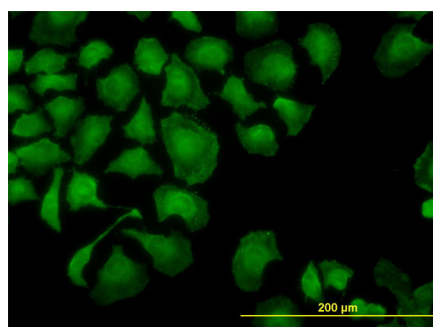


TROVE2 monoclonal antibody (M03), clone 1F2 Western Blot analysis of TROVE2 expression in HeLa ( (Cat # AT4366a )



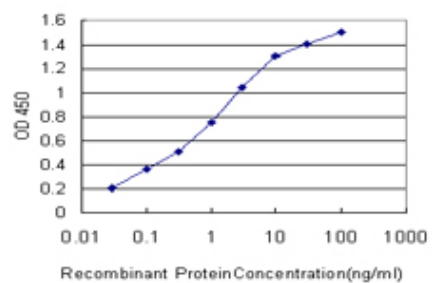
Western Blot analysis of TROVE2 expression in transfected 293T cell line by TROVE2 monoclonal antibody (M03), clone 1F2.

Lane 1: TROVE2 transfected lysate(60.7 KDa).  
Lane 2: Non-transfected lysate.



Immunofluorescence of monoclonal antibody to TROVE2 on HeLa cell. [antibody concentration 10 ug/ml]

Detection limit for recombinant GST tagged TROVE2 is approximately 0.03ng/ml as a capture antibody.



Please note: All products are 'FOR RESEARCH USE ONLY. NOT FOR USE IN DIAGNOSTIC OR THERAPEUTIC PROCEDURES'.