

TSPAN8 Antibody (monoclonal) (M02)

Mouse monoclonal antibody raised against a partial recombinant TSPAN8.

Catalog # AT4381a

Product Information

| | |
|--------------------------|---------------------------|
| Application | WB, IF, E |
| Primary Accession | P19075 |
| Other Accession | NM_004616 |
| Reactivity | Human |
| Host | Mouse |
| Clonality | monoclonal |
| Isotype | IgG3 Lambda |
| Clone Names | 1E6 |
| Calculated MW | 26044 |

Additional Information

| | |
|---------------------------|--|
| Gene ID | 7103 |
| Other Names | Tetraspanin-8, Tspan-8, Transmembrane 4 superfamily member 3, Tumor-associated antigen CO-029, TSPAN8, TM4SF3 |
| Target/Specificity | TSPAN8 (NP_004607, 110 a.a. ~ 205 a.a) partial recombinant protein with GST tag. MW of the GST tag alone is 26 KDa. |
| Dilution | WB~~1:500~1000 IF~~1:50~200 E~~N/A |
| Format | Clear, colorless solution in phosphate buffered saline, pH 7.2 . |
| Storage | Store at -20°C or lower. Aliquot to avoid repeated freezing and thawing. |
| Precautions | TSPAN8 Antibody (monoclonal) (M02) is for research use only and not for use in diagnostic or therapeutic procedures. |

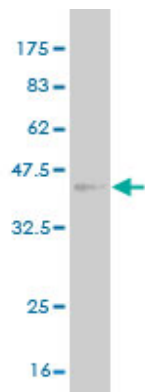
Background

The protein encoded by this gene is a member of the transmembrane 4 superfamily, also known as the tetraspanin family. Most of these members are cell-surface proteins that are characterized by the presence of four hydrophobic domains. The proteins mediate signal transduction events that play a role in the regulation of cell development, activation, growth and motility. This encoded protein is a cell surface glycoprotein that is known to complex with integrins. This gene is expressed in different carcinomas. The use of alternate polyadenylation sites has been found for this gene.

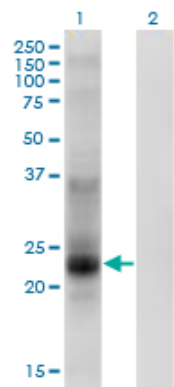
References

1.TM4SF3 promotes esophageal carcinoma metastasis via upregulating ADAM12m expression.Zhou Z, Ran YL, Hu H, Pan J, Li ZF, Chen LZ, Sun LC, Peng L, Zhao XL, Yu L, Sun LX, Yang ZH.Clin Exp Metastasis. 2008;25(5):537-48. Epub 2008 Mar 26.

Images



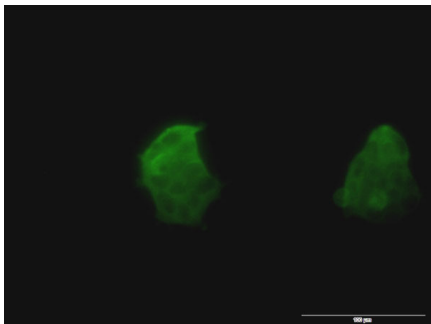
Antibody Reactive Against Recombinant Protein.Western Blot detection against Immunogen (36.3 KDa) .



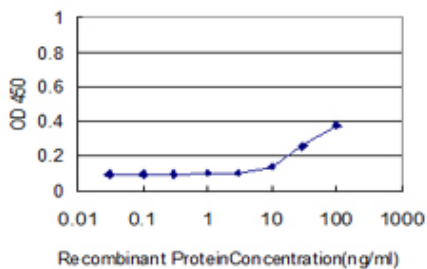
Western Blot analysis of TSPAN8 expression in transfected 293T cell line by TSPAN8 monoclonal antibody (M02), clone 1E5.

Lane 1: TSPAN8 transfected lysate (Predicted MW: 26.1 KDa).

Lane 2: Non-transfected lysate.



Immunofluorescence of monoclonal antibody to TSPAN8 on 293 cell . [antibody concentration 10 ug/ml]



Detection limit for recombinant GST tagged TSPAN8 is approximately 10ng/ml as a capture antibody.

Please note: All products are 'FOR RESEARCH USE ONLY. NOT FOR USE IN DIAGNOSTIC OR THERAPEUTIC PROCEDURES'.