

## TUBA1 Antibody (monoclonal) (M04)

Mouse monoclonal antibody raised against a full length recombinant TUBA1.

Catalog # AT4398a

### Product Information

---

<b>Application</b>	WB, IF
<b>Primary Accession</b>	<a href="#">P68366</a>
<b>Other Accession</b>	<a href="#">BC009238</a>
<b>Reactivity</b>	Human
<b>Host</b>	mouse
<b>Clonality</b>	monoclonal
<b>Isotype</b>	IgG2b Kappa
<b>Clone Names</b>	1E12
<b>Calculated MW</b>	49924

### Additional Information

---

<b>Gene ID</b>	7277
<b>Other Names</b>	Tubulin alpha-4A chain, Alpha-tubulin 1, Testis-specific alpha-tubulin, Tubulin H2-alpha, Tubulin alpha-1 chain, TUBA4A, TUBA1
<b>Target/Specificity</b>	TUBA1 (AAH09238, 1 a.a. ~ 448 a.a) full-length recombinant protein with GST tag. MW of the GST tag alone is 26 KDa.
<b>Dilution</b>	WB~~1:500~1000 IF~~1:50~200
<b>Format</b>	Clear, colorless solution in phosphate buffered saline, pH 7.2 .
<b>Storage</b>	Store at -20°C or lower. Aliquot to avoid repeated freezing and thawing.
<b>Precautions</b>	TUBA1 Antibody (monoclonal) (M04) is for research use only and not for use in diagnostic or therapeutic procedures.

### Background

---

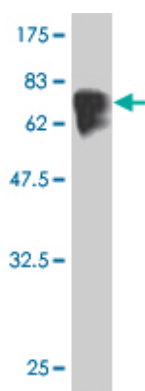
Microtubules of the eukaryotic cytoskeleton perform essential and diverse functions and are composed of a heterodimer of alpha and beta tubulin. The genes encoding these microtubule constituents are part of the tubulin superfamily, which is composed of six distinct families. Genes from the alpha, beta and gamma tubulin families are found in all eukaryotes. The alpha and beta tubulins represent the major components of microtubules, while gamma tubulin plays a critical role in the nucleation of microtubule assembly. There are multiple alpha and beta tubulin genes and they are highly conserved among and between species. This gene encodes an alpha tubulin that is a highly conserved homolog of a rat testis-specific alpha tubulin.

### References

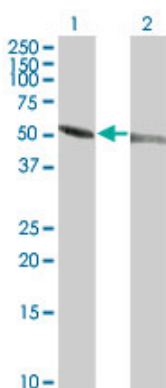
---

The role of height-associated loci identified in genome wide association studies in the determination of pediatric stature. Zhao J, et al. BMC Med Genet, 2010 Jun 14. PMID 20546612. Many sequence variants affecting diversity of adult human height. Gudbjartsson DF, et al. Nat Genet, 2008 May. PMID 18391951. Dynamic profiling of the post-translational modifications and interaction partners of epidermal growth factor receptor signaling after stimulation by epidermal growth factor using Extended Range Proteomic Analysis (ERPA). Wu SL, et al. Mol Cell Proteomics, 2006 Sep. PMID 16799092. The PITSLRE/CDK11p58 protein kinase promotes centrosome maturation and bipolar spindle formation. Petretti C, et al. EMBO Rep, 2006 Apr. PMID 16462731. Inhibitory effect of HIV-1 Tat protein on the sodium-D-glucose symporter of human intestinal epithelial cells. Canani RB, et al. AIDS, 2006 Jan 2. PMID 16327313.

## Images

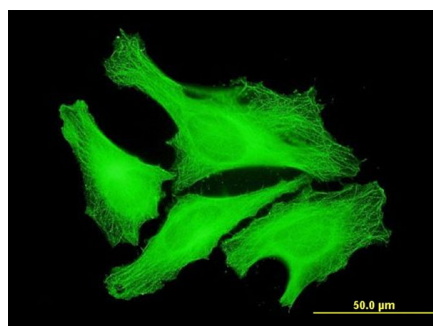


Antibody Reactive Against Recombinant Protein. Western Blot detection against Immunogen (75.02 KDa) .



Western Blot analysis of TUBA1 expression in transfected 293T cell line by TUBA1 monoclonal antibody (M04), clone 1E11.

Lane 1: TUBA1 transfected lysate (49.9 KDa).  
Lane 2: Non-transfected lysate.



Immunofluorescence of monoclonal antibody to TUBA4A on HeLa cell . [antibody concentration 10 ug/ml]

Please note: All products are 'FOR RESEARCH USE ONLY. NOT FOR USE IN DIAGNOSTIC OR THERAPEUTIC PROCEDURES'.