

TUBA2 Antibody (monoclonal) (M01)

Mouse monoclonal antibody raised against a full length recombinant TUBA2.

Catalog # AT4399a

Product Information

Application	WB, IHC, IF, E
Primary Accession	Q13748
Other Accession	BC011721
Reactivity	Human
Host	mouse
Clonality	monoclonal
Isotype	IgG1 kappa
Clone Names	3F10-2F2

Additional Information

Other Names	Tubulin alpha-3C/D chain, Alpha-tubulin 2, Alpha-tubulin 3C/D, Tubulin alpha-2 chain, TUBA3C, TUBA2
Target/Specificity	TUBA2 (AAH11721.1, 1 a.a. ~ 418 a.a) full-length recombinant protein with GST tag. MW of the GST tag alone is 26 KDa.
Dilution	WB~~1:500~1000 IHC~~1:100~500 IF~~1:50~200 E~~N/A
Format	Clear, colorless solution in phosphate buffered saline, pH 7.2 .
Storage	Store at -20°C or lower. Aliquot to avoid repeated freezing and thawing.
Precautions	TUBA2 Antibody (monoclonal) (M01) is for research use only and not for use in diagnostic or therapeutic procedures.

Background

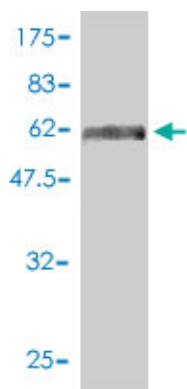
Microtubules of the eukaryotic cytoskeleton perform essential and diverse functions and are composed of a heterodimer of alpha and beta tubulin. The genes encoding these microtubule constituents are part of the tubulin superfamily, which is composed of six distinct families. Genes from the alpha, beta and gamma tubulin families are found in all eukaryotes. The alpha and beta tubulins represent the major components of microtubules, while gamma tubulin plays a critical role in the nucleation of microtubule assembly. There are multiple alpha and beta tubulin genes and they are highly conserved among and between species. This gene is an alpha tubulin gene that encodes a protein 99% identical to the mouse testis-specific Tuba3 and Tuba7 gene products. This gene is located in the 13q11 region, which is associated with the genetic diseases Clouston hidrotic ectodermal dysplasia and Kabuki syndrome.

References

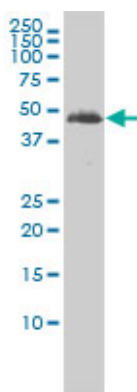
Inhibitory effect of HIV-1 Tat protein on the sodium-D-glucose symporter of human intestinal epithelial cells.

Canani RB, et al. AIDS, 2006 Jan 2. PMID 16327313. Towards a proteome-scale map of the human protein-protein interaction network. Rual JF, et al. Nature, 2005 Oct 20. PMID 16189514. Histone deacetylase 6 regulates human immunodeficiency virus type 1 infection. Valenzuela-Fernandez A, et al. Mol Biol Cell, 2005 Nov. PMID 16148047. HIV-1 Tat, apoptosis and the mitochondria: a tubulin link? Giacca M. Retrovirology, 2005 Feb 7. PMID 15698476. HIV-1 Tat protein enhances microtubule polymerization. de Mareuil J, et al. Retrovirology, 2005 Feb 3. PMID 15691386.

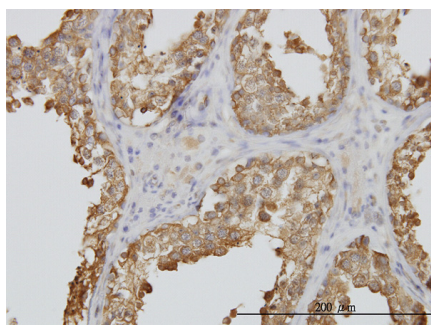
Images



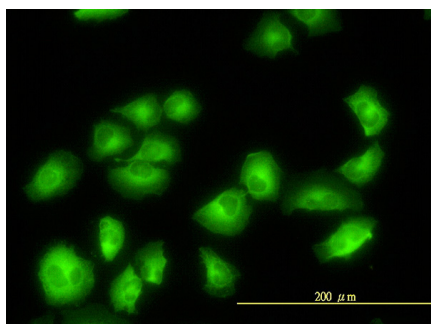
Antibody Reactive Against Recombinant Protein. Western Blot detection against Immunogen (71.72 KDa) .



TUBA2 monoclonal antibody (M01), clone 3F10-2F2
Western Blot analysis of TUBA2 expression in Jurkat (Cat # AT4399a)

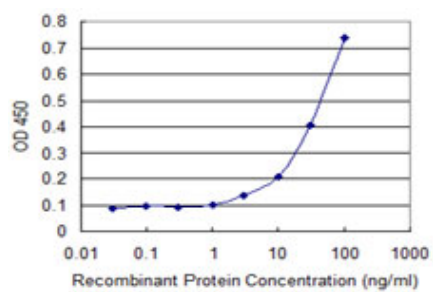


Immunoperoxidase of monoclonal antibody to TUBA2 on formalin-fixed paraffin-embedded human testis. [antibody concentration 3 ug/ml]



Immunofluorescence of monoclonal antibody to TUBA2 on HeLa cell. [antibody concentration 10 ug/ml]

Detection limit for recombinant GST tagged TUBA2 is approximately 0.03ng/ml as a capture antibody.



Please note: All products are 'FOR RESEARCH USE ONLY. NOT FOR USE IN DIAGNOSTIC OR THERAPEUTIC PROCEDURES'.