

TUBA6 Antibody (monoclonal) (M01)

Mouse monoclonal antibody raised against a full length recombinant TUBA6.

Catalog # AT4401a

Product Information

Application	WB, IF
Primary Accession	Q9BQE3
Other Accession	BC004949
Reactivity	Human
Host	mouse
Clonality	monoclonal
Isotype	IgG1 kappa
Clone Names	1D2-H5
Calculated MW	49895

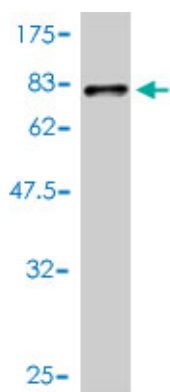
Additional Information

Gene ID	84790
Other Names	Tubulin alpha-1C chain, Alpha-tubulin 6, Tubulin alpha-6 chain, TUBA1C, TUBA6
Target/Specificity	TUBA6 (AAH04949.1, 1 a.a. ~ 449 a.a) full-length recombinant protein with GST tag. MW of the GST tag alone is 26 KDa.
Dilution	WB~~1:500~1000 IF~~1:50~200
Format	Clear, colorless solution in phosphate buffered saline, pH 7.2 .
Storage	Store at -20°C or lower. Aliquot to avoid repeated freezing and thawing.
Precautions	TUBA6 Antibody (monoclonal) (M01) is for research use only and not for use in diagnostic or therapeutic procedures.

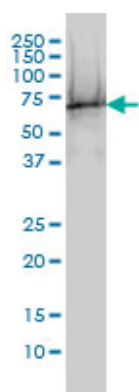
References

HDM2-binding partners: interaction with translation elongation factor EF1alpha. Frum R, et al. J Proteome Res, 2007 Apr. PMID 17373842. Global, in vivo, and site-specific phosphorylation dynamics in signaling networks. Olsen JV, et al. Cell, 2006 Nov 3. PMID 17081983. Inhibitory effect of HIV-1 Tat protein on the sodium-D-glucose symporter of human intestinal epithelial cells. Canani RB, et al. AIDS, 2006 Jan 2. PMID 16327313. Proteomic analysis of SUMO4 substrates in HEK293 cells under serum starvation-induced stress. Guo D, et al. Biochem Biophys Res Commun, 2005 Dec 2. PMID 16236267. Histone deacetylase 6 regulates human immunodeficiency virus type 1 infection. Valenzuela-Fernandez A, et al. Mol Biol Cell, 2005 Nov. PMID 16148047.

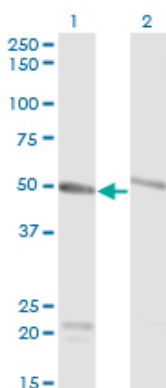
Images



Antibody Reactive Against Recombinant Protein. Western Blot detection against Immunogen (75.13 KDa) .



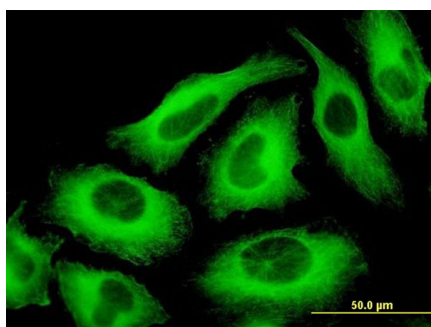
TUBA6 monoclonal antibody (M01), clone 1D2-H5
Western Blot analysis of TUBA6 expression in A-431 (Cat # AT4401a)



Western Blot analysis of TUBA1C expression in transfected 293T cell line by TUBA6 monoclonal antibody (M01), clone 1D2-H5.

Lane 1: TUBA1C transfected lysate (Predicted MW: 49.9 KDa).

Lane 2: Non-transfected lysate.



Immunofluorescence of monoclonal antibody to TUBA6 on HeLa cell . [antibody concentration 10 ug/ml]

Please note: All products are 'FOR RESEARCH USE ONLY. NOT FOR USE IN DIAGNOSTIC OR THERAPEUTIC PROCEDURES'.