

## TUBA6 Antibody (monoclonal) (M04)

Mouse monoclonal antibody raised against a full length recombinant TUBA6.

Catalog # AT4402a

### Product Information

---

<b>Application</b>	WB, IF, E
<b>Primary Accession</b>	<a href="#">Q9BQE3</a>
<b>Other Accession</b>	<a href="#">BC004949</a>
<b>Reactivity</b>	Human
<b>Host</b>	mouse
<b>Clonality</b>	monoclonal
<b>Isotype</b>	IgG1 Kappa
<b>Clone Names</b>	S11
<b>Calculated MW</b>	49895

### Additional Information

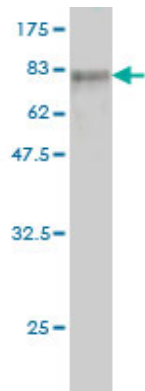
---

<b>Gene ID</b>	84790
<b>Other Names</b>	Tubulin alpha-1C chain, Alpha-tubulin 6, Tubulin alpha-6 chain, TUBA1C, TUBA6
<b>Target/Specificity</b>	TUBA6 (AAH04949.1, 1 a.a. ~ 449 a.a) full-length recombinant protein with GST tag. MW of the GST tag alone is 26 KDa.
<b>Dilution</b>	WB~~1:500~1000 IF~~1:50~200 E~~N/A
<b>Format</b>	Clear, colorless solution in phosphate buffered saline, pH 7.2 .
<b>Storage</b>	Store at -20°C or lower. Aliquot to avoid repeated freezing and thawing.
<b>Precautions</b>	TUBA6 Antibody (monoclonal) (M04) is for research use only and not for use in diagnostic or therapeutic procedures.

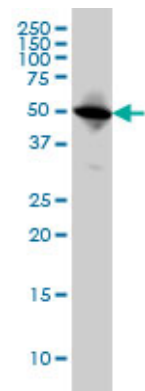
### References

---

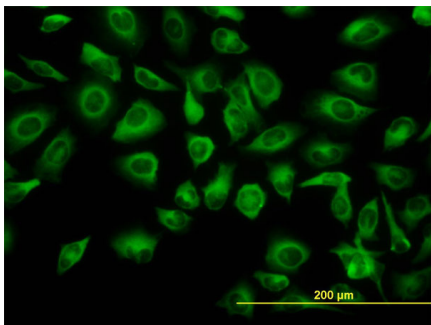
HDM2-binding partners: interaction with translation elongation factor EF1alpha. Frum R, et al. J Proteome Res, 2007 Apr. PMID 17373842. Global, in vivo, and site-specific phosphorylation dynamics in signaling networks. Olsen JV, et al. Cell, 2006 Nov 3. PMID 17081983. Inhibitory effect of HIV-1 Tat protein on the sodium-D-glucose symporter of human intestinal epithelial cells. Canani RB, et al. AIDS, 2006 Jan 2. PMID 16327313. Proteomic analysis of SUMO4 substrates in HEK293 cells under serum starvation-induced stress. Guo D, et al. Biochem Biophys Res Commun, 2005 Dec 2. PMID 16236267. Histone deacetylase 6 regulates human immunodeficiency virus type 1 infection. Valenzuela-Fernandez A, et al. Mol Biol Cell, 2005 Nov. PMID 16148047.



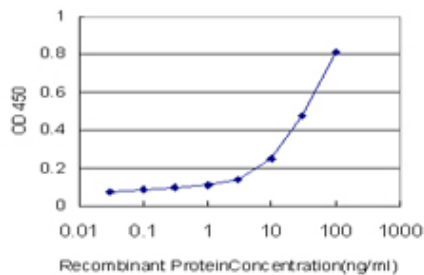
Antibody Reactive Against Recombinant Protein.Western Blot detection against Immunogen (75.13 KDa) .



TUBA6 monoclonal antibody (M04), clone S11 Western Blot analysis of TUBA6 expression in HeLa ( (Cat # AT4402a )



Immunofluorescence of monoclonal antibody to TUBA6 on HeLa cell. [antibody concentration 10 ug/ml]



Detection limit for recombinant GST tagged TUBA6 is approximately 3ng/ml as a capture antibody.

Please note: All products are 'FOR RESEARCH USE ONLY. NOT FOR USE IN DIAGNOSTIC OR THERAPEUTIC PROCEDURES'.