

## TUBB Antibody (monoclonal) (M04)

Mouse monoclonal antibody raised against a full-length recombinant TUBB.

Catalog # AT4403a

### Product Information

---

<b>Application</b>	WB, IHC, E
<b>Primary Accession</b>	<a href="#">P07437</a>
<b>Other Accession</b>	<a href="#">BC019924</a>
<b>Reactivity</b>	Human
<b>Host</b>	mouse
<b>Clonality</b>	monoclonal
<b>Isotype</b>	IgG2a Kappa
<b>Clone Names</b>	3B3
<b>Calculated MW</b>	49671

### Additional Information

---

<b>Gene ID</b>	203068
<b>Other Names</b>	Tubulin beta chain, Tubulin beta-5 chain, TUBB, TUBB5
<b>Target/Specificity</b>	TUBB (AAH19924, 1 a.a. ~ 444 a.a) full-length recombinant protein with GST tag. MW of the GST tag alone is 26 KDa.
<b>Dilution</b>	WB~~1:500~1000 IHC~~1:100~500 E~~N/A
<b>Format</b>	Clear, colorless solution in phosphate buffered saline, pH 7.2 .
<b>Storage</b>	Store at -20°C or lower. Aliquot to avoid repeated freezing and thawing.
<b>Precautions</b>	TUBB Antibody (monoclonal) (M04) is for research use only and not for use in diagnostic or therapeutic procedures.

### References

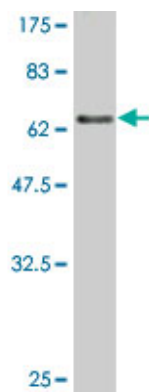
---

1.Tubulin Acetylation Alone Does Not Affect Kinesin-1 Velocity and Run Length In Vitro.Walter WJ, Beranek V, Fischermeier E, Diez S.PLoS One. 2012;7(8):e42218. Epub 2012 Aug 1.2.Immune reactivity to  $\alpha$ -tubulin isotype 5 and vesicular integral-membrane protein 36 in patients with autoimmune gastrointestinal disorders.Op De Beeck K, Van den Bergh K, Vermeire S, Decock S, Derua R, Waelkens E, Rutgeerts P, Nevens F, Bossuyt X.Gut. 2010 Dec 15. [Epub ahead of print]

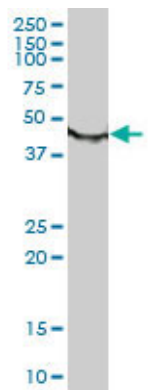
### Images

---

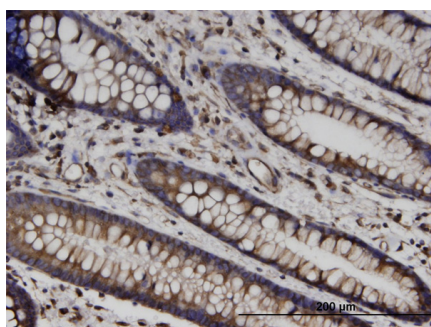
Antibody Reactive Against Recombinant Protein.Western



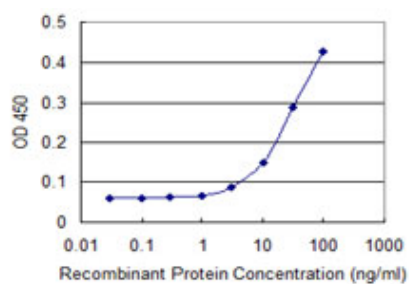
Blot detection against Immunogen (74.36 kDa) .



TUBB monoclonal antibody (M04), clone 3B3. Western Blot analysis of TUBB expression in Y-79 ( (Cat # AT4403a )



Immunoperoxidase of monoclonal antibody to TUBB on formalin-fixed paraffin-embedded human colon. [antibody concentration 3 ug/ml]



Detection limit for recombinant GST tagged TUBB is 1 ng/ml as a capture antibody.

Please note: All products are 'FOR RESEARCH USE ONLY. NOT FOR USE IN DIAGNOSTIC OR THERAPEUTIC PROCEDURES'.