

TULP2 Antibody (monoclonal) (M03)

Mouse monoclonal antibody raised against a partial recombinant TULP2.

Catalog # AT4409a

Product Information

Application	WB, IF
Primary Accession	O00295
Other Accession	NM_003323
Reactivity	Human, Mouse, Rat
Host	mouse
Clonality	monoclonal
Isotype	IgG2a Kappa
Clone Names	2B5
Calculated MW	58664

Additional Information

Gene ID	7288
Other Names	Tubby-related protein 2, Cancer/testis antigen 65, CT65, Tubby-like protein 2, TULP2, TUBL2
Target/Specificity	TULP2 (NP_003314, 141 a.a. ~ 250 a.a) partial recombinant protein with GST tag. MW of the GST tag alone is 26 KDa.
Dilution	WB~~1:500~1000 IF~~1:50~200
Format	Clear, colorless solution in phosphate buffered saline, pH 7.2 .
Storage	Store at -20°C or lower. Aliquot to avoid repeated freezing and thawing.
Precautions	TULP2 Antibody (monoclonal) (M03) is for research use only and not for use in diagnostic or therapeutic procedures.

Background

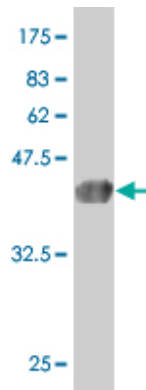
TULP2 is a member of a family of tubby-like genes (TULPs) that encode proteins of unknown function. Members of this family have been identified in plants, vertebrates, and invertebrates. The TULP proteins share a conserved C-terminal region of approximately 200 amino acid residues.

References

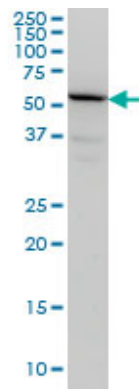
Towards a proteome-scale map of the human protein-protein interaction network. Rual JF, et al. Nature, 2005 Oct 20. PMID 16189514. Tubby proteins: the plot thickens. Carroll K, et al. Nat Rev Mol Cell Biol, 2004 Jan. PMID 14708010. Generation and initial analysis of more than 15,000 full-length human and mouse cDNA

sequences. Strausberg RL, et al. Proc Natl Acad Sci U S A, 2002 Dec 24. PMID 12477932. Implication of tubby proteins as transcription factors by structure-based functional analysis. Boggon TJ, et al. Science, 1999 Dec 10. PMID 10591637. Molecular characterization of TUB, TULP1, and TULP2, members of the novel tubby gene family and their possible relation to ocular diseases. North MA, et al. Proc Natl Acad Sci U S A, 1997 Apr 1. PMID 9096357.

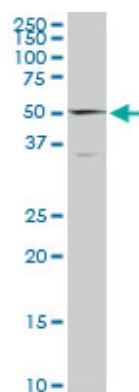
Images



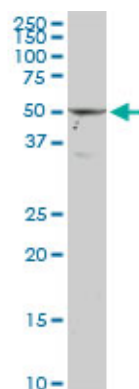
Antibody Reactive Against Recombinant Protein. Western Blot detection against Immunogen (37.84 kDa) .



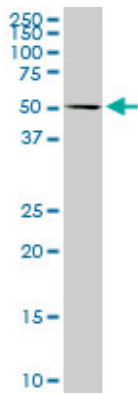
TULP2 monoclonal antibody (M03), clone 2B5 Western Blot analysis of TULP2 expression in HeLa (Cat # AT4409a)



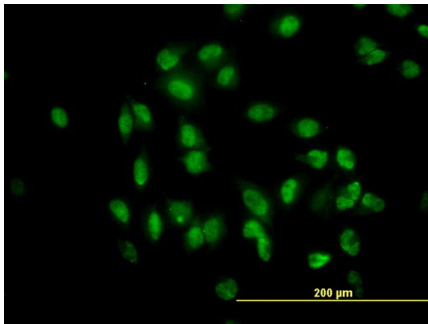
TULP2 monoclonal antibody (M03), clone 2B5. Western Blot analysis of TULP2 expression in PC-12 (Cat # AT4409a)



TULP2 monoclonal antibody (M03), clone 2B5. Western Blot analysis of TULP2 expression in Raw 264.7 (Cat # AT4409a)



TULP2 monoclonal antibody (M03), clone 2B5. Western Blot analysis of TULP2 expression in NIH/3T3 (Cat # AT4409a)



Immunofluorescence of monoclonal antibody to TULP2 on HeLa cell. [antibody concentration 10 ug/ml]

Please note: All products are 'FOR RESEARCH USE ONLY. NOT FOR USE IN DIAGNOSTIC OR THERAPEUTIC PROCEDURES'.