

## TXN Antibody (monoclonal) (M01)

Mouse monoclonal antibody raised against a full length recombinant TXN.

Catalog # AT4414a

### Product Information

---

<b>Application</b>	WB, IF, IP, E
<b>Primary Accession</b>	<a href="#">P10599</a>
<b>Other Accession</b>	<a href="#">BC003377</a>
<b>Reactivity</b>	Human
<b>Host</b>	Mouse
<b>Clonality</b>	monoclonal
<b>Isotype</b>	IgG1 Kappa
<b>Clone Names</b>	2A7
<b>Calculated MW</b>	11737

### Additional Information

---

<b>Gene ID</b>	7295
<b>Other Names</b>	Thioredoxin, Trx, ATL-derived factor, ADF, Surface-associated sulphydryl protein, SASP, TXN, TRDX, TRX, TRX1
<b>Target/Specificity</b>	TXN (AAH03377, 1 a.a. ~ 105 a.a) full-length recombinant protein with GST tag. MW of the GST tag alone is 26 KDa.
<b>Dilution</b>	WB~~1:500~1000 IF~~1:50~200 IP~~N/A E~~N/A
<b>Format</b>	Clear, colorless solution in phosphate buffered saline, pH 7.2 .
<b>Storage</b>	Store at -20°C or lower. Aliquot to avoid repeated freezing and thawing.
<b>Precautions</b>	TXN Antibody (monoclonal) (M01) is for research use only and not for use in diagnostic or therapeutic procedures.

### Background

---

Thioredoxin is a 12-kD oxidoreductase enzyme containing a dithiol-disulfide active site. It is ubiquitous and found in many organisms from plants and bacteria to mammals. Multiple in vitro substrates for thioredoxin have been identified, including ribonuclease, choriogonadotropins, coagulation factors, glucocorticoid receptor, and insulin. Reduction of insulin is classically used as an activity test.

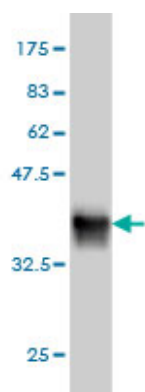
### References

---

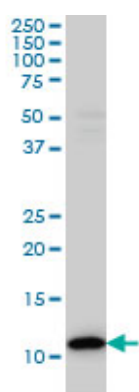
Variation at the NFATC2 Locus Increases the Risk of Thiazolinedinedione-Induced Edema in the Diabetes REduction Assessment with ramipril and rosiglitazone Medication (DREAM) Study. Bailey SD, et al. Diabetes

Care, 2010 Jul 13. PMID 20628086. Thioredoxin-1 phosphorylated at T100 is needed for its anti-apoptotic activity in HepG2 cancer cells. Chen X, et al. Life Sci, 2010 Aug 14. PMID 20619274. Mammalian thioredoxin reductase 1: roles in redox homeostasis and characterization of cellular targets. Turanov AA, et al. Biochem J, 2010 Sep 1. PMID 20536427. Common polymorphisms in ITGA2, PON1 and THBS2 are associated with coronary atherosclerosis in a candidate gene association study of the Chinese Han population. Wang Y, et al. J Hum Genet, 2010 Aug. PMID 20485444. Serum C-reactive protein and thioredoxin levels in subjects with mildly reduced glomerular filtration rate. Tsuchikura S, et al. BMC Nephrol, 2010 Apr 27. PMID 20423474.

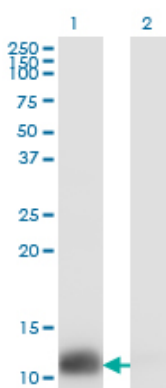
## Images



Antibody Reactive Against Recombinant Protein. Western Blot detection against Immunogen (37.29 KDa) .

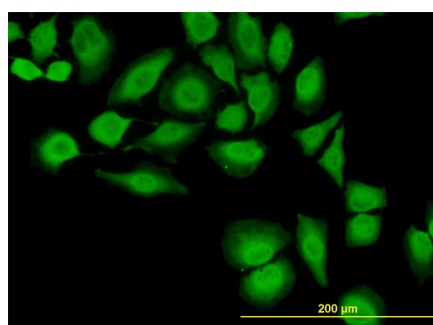


TXN monoclonal antibody (M01), clone 2A7 Western Blot analysis of TXN expression in HeLa ( (Cat # AT4414a )

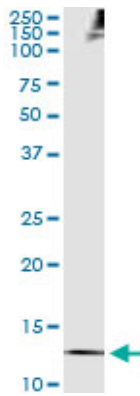


Western Blot analysis of TXN expression in transfected 293T cell line by TXN monoclonal antibody (M01), clone 2A7.

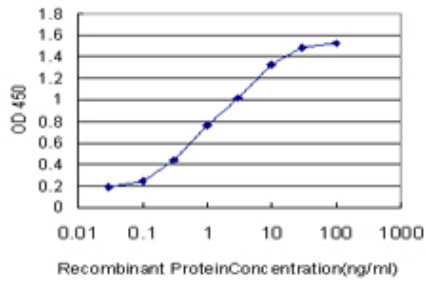
Lane 1: TXN transfected lysate(11.7 KDa).  
Lane 2: Non-transfected lysate.



Immunofluorescence of monoclonal antibody to TXN on HeLa cell. [antibody concentration 10 ug/ml]



Immunoprecipitation of TXN transfected lysate using anti-TXN monoclonal antibody and Protein A Magnetic Bead ([U0007](#)), and immunoblotted with TXN MaxPab rabbit polyclonal antibody.



Detection limit for recombinant GST tagged TXN is approximately 0.03ng/ml as a capture antibody.

Please note: All products are 'FOR RESEARCH USE ONLY. NOT FOR USE IN DIAGNOSTIC OR THERAPEUTIC PROCEDURES'.