

UBE2B Antibody (monoclonal) (M06)

Mouse monoclonal antibody raised against a partial recombinant UBE2B.

Catalog # AT4428a

Product Information

Application	WB, E
Primary Accession	P63146
Other Accession	NM_003337
Reactivity	Human
Host	mouse
Clonality	monoclonal
Isotype	IgG2a Kappa
Clone Names	4C3
Calculated MW	17312

Additional Information

Gene ID	7320
Other Names	Ubiquitin-conjugating enzyme E2 B, RAD6 homolog B, HR6B, hHR6B, Ubiquitin carrier protein B, Ubiquitin-conjugating enzyme E2-17 kDa, Ubiquitin-protein ligase B, UBE2B, RAD6B
Target/Specificity	UBE2B (NP_003328.1, 63 a.a. ~ 152 a.a) partial recombinant protein with GST tag. MW of the GST tag alone is 26 KDa.
Dilution	WB~~1:500~1000 E~~N/A
Format	Clear, colorless solution in phosphate buffered saline, pH 7.2 .
Storage	Store at -20°C or lower. Aliquot to avoid repeated freezing and thawing.
Precautions	UBE2B Antibody (monoclonal) (M06) is for research use only and not for use in diagnostic or therapeutic procedures.

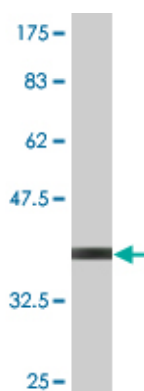
Background

The modification of proteins with ubiquitin is an important cellular mechanism for targeting abnormal or short-lived proteins for degradation. Ubiquitination involves at least three classes of enzymes: ubiquitin-activating enzymes, or E1s, ubiquitin-conjugating enzymes, or E2s, and ubiquitin-protein ligases, or E3s. This gene encodes a member of the E2 ubiquitin-conjugating enzyme family. This enzyme is required for post-replicative DNA damage repair. Its protein sequence is 100% identical to the mouse, rat, and rabbit homologs, which indicates that this enzyme is highly conserved in eukaryotic evolution.

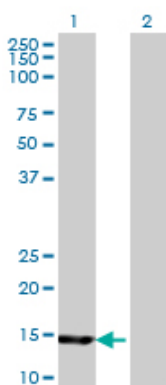
References

Evaluation of 172 candidate polymorphisms for association with oligozoospermia or azoospermia in a large cohort of men of European descent. Aston KI, et al. Hum Reprod, 2010 Jun. PMID 20378615. Direct characterization of E2-dependent target specificity and processivity using an artificial p27-linker-E2 ubiquitination system. Ryu KS, et al. BMB Rep, 2008 Dec 31. PMID 19123975. Novel variants in UBE2B gene and idiopathic male infertility. Suryavathi V, et al. J Androl, 2008 Sep-Oct. PMID 18497339. Novel UBE2B-associated polymorphisms in an azoospermic/oligozoospermic population. Huang I, et al. Asian J Androl, 2008 May. PMID 18385908. Recognition of forked and single-stranded DNA structures by human RAD18 complexed with RAD6B protein triggers its recruitment to stalled replication forks. Tsuji Y, et al. Genes Cells, 2008 Apr. PMID 18363965.

Images

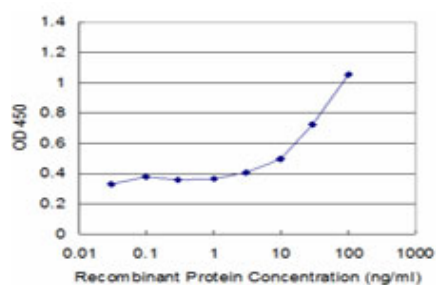


Antibody Reactive Against Recombinant Protein. Western Blot detection against Immunogen (35.64 KDa) .



Western Blot analysis of UBE2B expression in transfected 293T cell line by UBE2B monoclonal antibody (M06), clone 4C3.

Lane 1: UBE2B transfected lysate (17.3 KDa).
Lane 2: Non-transfected lysate.



Detection limit for recombinant GST tagged UBE2B is approximately 3ng/ml as a capture antibody.

Please note: All products are 'FOR RESEARCH USE ONLY. NOT FOR USE IN DIAGNOSTIC OR THERAPEUTIC PROCEDURES'.