

UBE2C Antibody (monoclonal) (M04)

Mouse monoclonal antibody raised against a full length recombinant UBE2C.

Catalog # AT4430a

Product Information

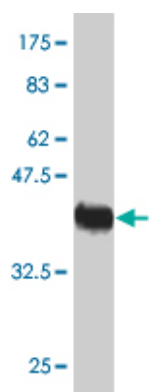
Application	WB, IF
Primary Accession	O00762
Other Accession	BC050736
Reactivity	Human
Host	mouse
Clonality	monoclonal
Isotype	IgG2a Kappa
Clone Names	3B1
Calculated MW	19652

Additional Information

Gene ID	11065
Other Names	Ubiquitin-conjugating enzyme E2 C, Ubch10, Ubiquitin carrier protein C, Ubiquitin-protein ligase C, UBE2C, UBCH10
Target/Specificity	UBE2C (AAH50736, 1 a.a. ~ 179 a.a) full-length recombinant protein with GST tag. MW of the GST tag alone is 26 KDa.
Dilution	WB~~1:500~1000 IF~~1:50~200
Format	Clear, colorless solution in phosphate buffered saline, pH 7.2 .
Storage	Store at -20°C or lower. Aliquot to avoid repeated freezing and thawing.
Precautions	UBE2C Antibody (monoclonal) (M04) is for research use only and not for use in diagnostic or therapeutic procedures.

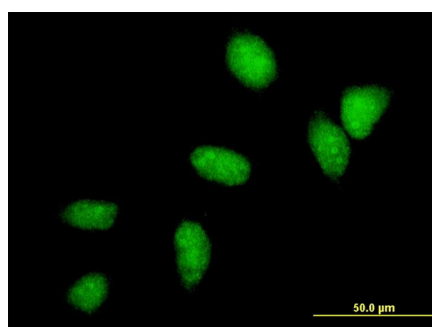
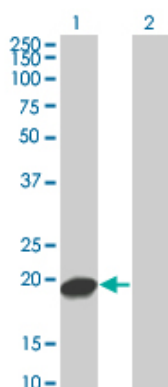
Images

Antibody Reactive Against Recombinant Protein.Western Blot detection against Immunogen (45.43 KDa) .



Western Blot analysis of UBE2C expression in transfected 293T cell line by UBE2C monoclonal antibody (M04), clone 3B1.

Lane 1: UBE2C transfected lysate(19.7 KDa).
Lane 2: Non-transfected lysate.



Immunofluorescence of monoclonal antibody to UBE2C on HeLa cell . [antibody concentration 10 ug/ml]

Please note: All products are 'FOR RESEARCH USE ONLY. NOT FOR USE IN DIAGNOSTIC OR THERAPEUTIC PROCEDURES'.