

UBE2D3 Antibody (monoclonal) (M01)

Mouse monoclonal antibody raised against a full length recombinant UBE2D3.

Catalog # AT4433a

Product Information

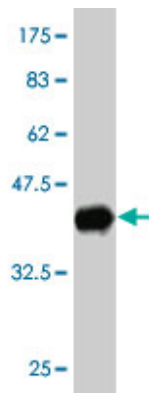
Application	WB, E
Primary Accession	P61077
Other Accession	BC003395
Reactivity	Human
Host	mouse
Clonality	monoclonal
Isotype	IgG1 kappa
Clone Names	4C1-1E3
Calculated MW	16687

Additional Information

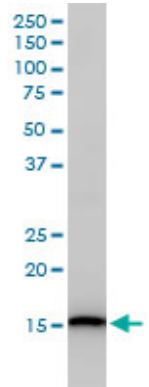
Gene ID	7323
Other Names	Ubiquitin-conjugating enzyme E2 D3, Ubiquitin carrier protein D3, Ubiquitin-conjugating enzyme E2(17)KB 3, Ubiquitin-conjugating enzyme E2-17 kDa 3, Ubiquitin-protein ligase D3, UBE2D3, UBC5C, UBCH5C
Target/Specificity	UBE2D3 (AAH03395, 1 a.a. ~ 147 a.a) full-length recombinant protein with GST tag. MW of the GST tag alone is 26 KDa.
Dilution	WB~~1:500~1000 E~~N/A
Format	Clear, colorless solution in phosphate buffered saline, pH 7.2 .
Storage	Store at -20°C or lower. Aliquot to avoid repeated freezing and thawing.
Precautions	UBE2D3 Antibody (monoclonal) (M01) is for research use only and not for use in diagnostic or therapeutic procedures.

Images

Antibody Reactive Against Recombinant Protein.Western Blot detection against Immunogen (41.91 KDa) .

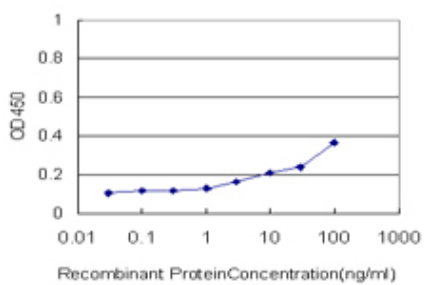
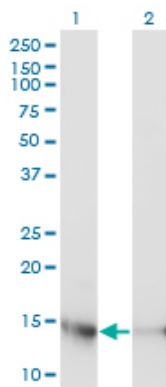


UBE2D3 monoclonal antibody (M01), clone 4C1-1E3
Western Blot analysis of UBE2D3 expression in Jurkat (Cat # AT4433a)



Western Blot analysis of UBE2D3 expression in transfected 293T cell line by UBE2D3 monoclonal antibody (M01), clone 4C1-1E3.

Lane 1: UBE2D3 transfected lysate(16.7 KDa).
Lane 2: Non-transfected lysate.



Detection limit for recombinant GST tagged UBE2D3 is approximately 1ng/ml as a capture antibody.

Please note: All products are 'FOR RESEARCH USE ONLY. NOT FOR USE IN DIAGNOSTIC OR THERAPEUTIC PROCEDURES'.