

# UBE2E2 Antibody (monoclonal) (M01)

Mouse monoclonal antibody raised against a full length recombinant UBE2E2.

Catalog # AT4434a

## Product Information

---

<b>Application</b>	WB, IF, E
<b>Primary Accession</b>	<a href="#">Q96LR5</a>
<b>Other Accession</b>	<a href="#">BC022332</a>
<b>Reactivity</b>	Human
<b>Host</b>	mouse
<b>Clonality</b>	monoclonal
<b>Isotype</b>	IgG1 Kappa
<b>Clone Names</b>	4B4
<b>Calculated MW</b>	22255

## Additional Information

---

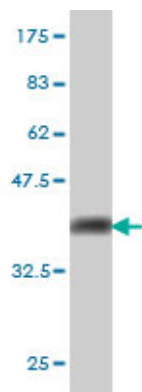
<b>Gene ID</b>	7325
<b>Other Names</b>	Ubiquitin-conjugating enzyme E2 E2, Ubch8, Ubiquitin carrier protein E2, Ubiquitin-protein ligase E2, UBE2E2, UBCH8
<b>Target/Specificity</b>	UBE2E2 (AAH22332, 1 a.a. ~ 201 a.a) full-length recombinant protein with GST tag. MW of the GST tag alone is 26 KDa.
<b>Dilution</b>	WB~~1:500~1000 IF~~1:50~200 E~~N/A
<b>Format</b>	Clear, colorless solution in phosphate buffered saline, pH 7.2 .
<b>Storage</b>	Store at -20°C or lower. Aliquot to avoid repeated freezing and thawing.
<b>Precautions</b>	UBE2E2 Antibody (monoclonal) (M01) is for research use only and not for use in diagnostic or therapeutic procedures.

## References

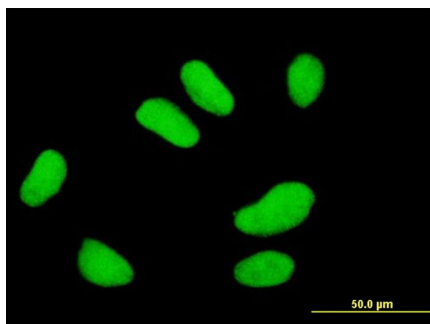
---

A genome-wide association study in the Japanese population identifies susceptibility loci for type 2 diabetes at UBE2E2 and C2CD4A-C2CD4B. Yamauchi T, et al. Nat Genet, 2010 Sep 5. PMID 20818381. Personalized smoking cessation: interactions between nicotine dose, dependence and quit-success genotype score. Rose JE, et al. Mol Med, 2010 Jul-Aug. PMID 20379614. Multiple common variants for celiac disease influencing immune gene expression. Dubois PC, et al. Nat Genet, 2010 Apr. PMID 20190752. Replication of a genome-wide case-control study of esophageal squamous cell carcinoma. Ng D, et al. Int J Cancer, 2008 Oct 1. PMID 18649358. Interactions between the quality control ubiquitin ligase CHIP and ubiquitin conjugating enzymes. Xu Z, et al. BMC Struct Biol, 2008 May 16. PMID 18485199.

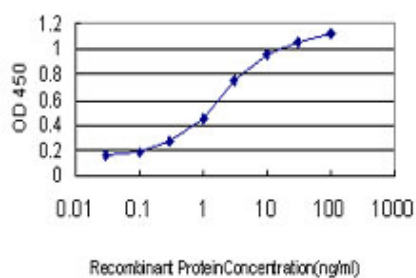
## Images



Antibody Reactive Against Recombinant Protein. Western Blot detection against Immunogen (47.85 KDa) .



Immunofluorescence of monoclonal antibody to UBE2E2 on HeLa cell . [antibody concentration 10 ug/ml]



Detection limit for recombinant GST tagged UBE2E2 is approximately 0.03ng/ml as a capture antibody.

Please note: All products are 'FOR RESEARCH USE ONLY. NOT FOR USE IN DIAGNOSTIC OR THERAPEUTIC PROCEDURES'.