

UBE2G1 Antibody (monoclonal) (M01)

Mouse monoclonal antibody raised against a full length recombinant UBE2G1.

Catalog # AT4435a

Product Information

Application	WB, IF
Primary Accession	P62253
Other Accession	BC002775
Reactivity	Human
Host	mouse
Clonality	monoclonal
Isotype	IgG1 kappa
Clone Names	S2
Calculated MW	19509

Additional Information

Gene ID	7326
Other Names	Ubiquitin-conjugating enzyme E2 G1, E217K, UBC7, Ubiquitin carrier protein G1, Ubiquitin-protein ligase G1, Ubiquitin-conjugating enzyme E2 G1, N-terminally processed, UBE2G1, UBE2G
Target/Specificity	UBE2G1 (AAH02775, 1 a.a. ~ 170 a.a) full-length recombinant protein with GST tag. MW of the GST tag alone is 26 KDa.
Dilution	WB~~1:500~1000 IF~~1:50~200
Format	Clear, colorless solution in phosphate buffered saline, pH 7.2 .
Storage	Store at -20°C or lower. Aliquot to avoid repeated freezing and thawing.
Precautions	UBE2G1 Antibody (monoclonal) (M01) is for research use only and not for use in diagnostic or therapeutic procedures.

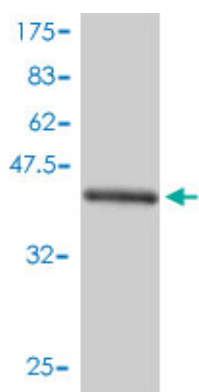
Background

The modification of proteins with ubiquitin is an important cellular mechanism for targeting abnormal or short-lived proteins for degradation. Ubiquitination involves at least three classes of enzymes: ubiquitin-activating enzymes, or E1s, ubiquitin-conjugating enzymes, or E2s, and ubiquitin-protein ligases, or E3s. This gene encodes a member of the E2 ubiquitin-conjugating enzyme family and catalyzes the covalent attachment of ubiquitin to other proteins. The protein may be involved in degradation of muscle-specific proteins.

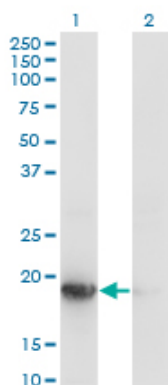
References

Ubiquitination-induced conformational change within the deiodinase dimer is a switch regulating enzyme activity. Sagar GD, et al. Mol Cell Biol, 2007 Jul. PMID 17452445. The status, quality, and expansion of the NIH full-length cDNA project: the Mammalian Gene Collection (MGC). Gerhard DS, et al. Genome Res, 2004 Oct. PMID 15489334. Endoplasmic reticulum-associated degradation of the human type 2 iodothyronine deiodinase (D2) is mediated via an association between mammalian UBC7 and the carboxyl region of D2. Kim BW, et al. Mol Endocrinol, 2003 Dec. PMID 12933904. Exploring proteomes and analyzing protein processing by mass spectrometric identification of sorted N-terminal peptides. Gevaert K, et al. Nat Biotechnol, 2003 May. PMID 12665801. Generation and initial analysis of more than 15,000 full-length human and mouse cDNA sequences. Strausberg RL, et al. Proc Natl Acad Sci U S A, 2002 Dec 24. PMID 12477932.

Images



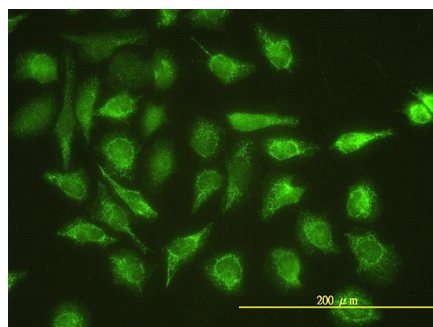
Antibody Reactive Against Recombinant Protein. Western Blot detection against Immunogen (44.44 KDa) .



Western Blot analysis of UBE2G1 expression in transfected 293T cell line by UBE2G1 monoclonal antibody (M01), clone 1C12-1B2.

Lane 1: UBE2G1 transfected lysate (Predicted MW: 19.5 KDa).

Lane 2: Non-transfected lysate.



Immunofluorescence of monoclonal antibody to UBE2G1 on HeLa cell. [antibody concentration 20 ug/ml]

Please note: All products are 'FOR RESEARCH USE ONLY. NOT FOR USE IN DIAGNOSTIC OR THERAPEUTIC PROCEDURES'.