

UBE2N Antibody (monoclonal) (M02)

Mouse monoclonal antibody raised against a full length recombinant UBE2N.

Catalog # AT4441a

Product Information

Application	WB, IF, E
Primary Accession	P61088
Other Accession	BC003365
Reactivity	Human
Host	mouse
Clonality	monoclonal
Isotype	IgG2b Kappa
Clone Names	3G1-D10
Calculated MW	17138

Additional Information

Gene ID	7334
Other Names	Ubiquitin-conjugating enzyme E2 N, Bendless-like ubiquitin-conjugating enzyme, Ubc13, UbcH13, Ubiquitin carrier protein N, Ubiquitin-protein ligase N, UBE2N, BLU
Target/Specificity	UBE2N (AAH03365, 1 a.a. ~ 152 a.a) full-length recombinant protein with GST tag. MW of the GST tag alone is 26 KDa.
Dilution	WB~~1:500~1000 IF~~1:50~200 E~~N/A
Format	Clear, colorless solution in phosphate buffered saline, pH 7.2 .
Storage	Store at -20°C or lower. Aliquot to avoid repeated freezing and thawing.
Precautions	UBE2N Antibody (monoclonal) (M02) is for research use only and not for use in diagnostic or therapeutic procedures.

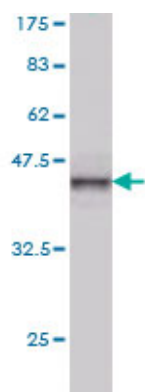
Background

The modification of proteins with ubiquitin is an important cellular mechanism for targeting abnormal or short-lived proteins for degradation. Ubiquitination involves at least three classes of enzymes: ubiquitin-activating enzymes, or E1s, ubiquitin-conjugating enzymes, or E2s, and ubiquitin-protein ligases, or E3s. This gene encodes a member of the E2 ubiquitin-conjugating enzyme family. Studies in mouse suggest that this protein plays a role in DNA postreplication repair.

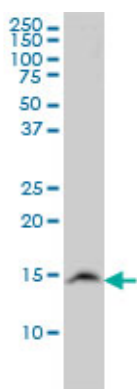
References

The role of height-associated loci identified in genome wide association studies in the determination of pediatric stature. Zhao J, et al. BMC Med Genet, 2010 Jun 14. PMID 20546612. A comprehensive framework of E2-RING E3 interactions of the human ubiquitin-proteasome system. van Wijk SJ, et al. Mol Syst Biol, 2009. PMID 19690564. Control of p53 multimerization by Ubc13 is JNK-regulated. Topisirovic I, et al. Proc Natl Acad Sci U S A, 2009 Aug 4. PMID 19651615. Defining the human deubiquitinating enzyme interaction landscape. Sowa ME, et al. Cell, 2009 Jul 23. PMID 19615732. Analysis of the human E2 ubiquitin conjugating enzyme protein interaction network. Markson G, et al. Genome Res, 2009 Oct. PMID 19549727.

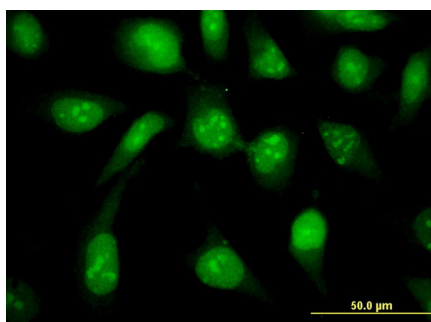
Images



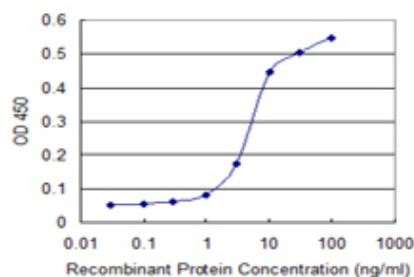
Antibody Reactive Against Recombinant Protein. Western Blot detection against Immunogen (42.46 KDa) .



UBE2N monoclonal antibody (M02), clone 3G1-D10 Western Blot analysis of UBE2N expression in LNCaP (Cat # AT4441a)



Immunofluorescence of monoclonal antibody to UBE2N on HeLa cell . [antibody concentration 10 ug/ml]



Detection limit for recombinant GST tagged UBE2N is 0.3 ng/ml as a capture antibody.