

UBE2R2 Antibody (monoclonal) (M01)

Mouse monoclonal antibody raised against a full length recombinant UBE2R2.

Catalog # AT4443a

Product Information

Application	WB, IP, E
Primary Accession	Q712K3
Other Accession	BC047584
Reactivity	Human
Host	mouse
Clonality	monoclonal
Isotype	IgG2b kappa
Clone Names	5E8
Calculated MW	27166

Additional Information

Gene ID	54926
Other Names	Ubiquitin-conjugating enzyme E2 R2, Ubiquitin carrier protein R2, Ubiquitin-conjugating enzyme E2-CDC34B, Ubiquitin-protein ligase R2, UBE2R2, CDC34B, UBC3B
Target/Specificity	UBE2R2 (AAH47584, 1 a.a. ~ 238 a.a) full-length recombinant protein with GST tag. MW of the GST tag alone is 26 KDa.
Dilution	WB~~1:500~1000 IP~~N/A E~~N/A
Format	Clear, colorless solution in phosphate buffered saline, pH 7.2 .
Storage	Store at -20°C or lower. Aliquot to avoid repeated freezing and thawing.
Precautions	UBE2R2 Antibody (monoclonal) (M01) is for research use only and not for use in diagnostic or therapeutic procedures.

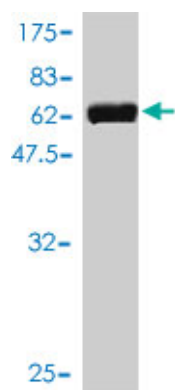
Background

Protein kinase CK2 is a ubiquitous and pleiotropic Ser/Thr protein kinase involved in cell growth and transformation. This gene encodes a protein similar to the E2 ubiquitin conjugating enzyme UBC3/CDC34. Studies suggest that CK2-dependent phosphorylation of this ubiquitin-conjugating enzyme functions by regulating beta-TrCP substrate recognition and induces its interaction with beta-TrCP, enhancing beta-catenin degradation.

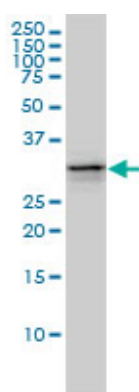
References

Personalized smoking cessation: interactions between nicotine dose, dependence and quit-success genotype score. Rose JE, et al. Mol Med, 2010 Jul-Aug. PMID 20379614. Association of genetic variants with hemorrhagic stroke in Japanese individuals. Yoshida T, et al. Int J Mol Med, 2010 Apr. PMID 20198315. Assessment of a polymorphism of SDK1 with hypertension in Japanese Individuals. Oguri M, et al. Am J Hypertens, 2010 Jan. PMID 19851296. Collaborative genome-wide association analysis supports a role for ANK3 and CACNA1C in bipolar disorder. Ferreira MA, et al. Nat Genet, 2008 Sep. PMID 18711365. The status, quality, and expansion of the NIH full-length cDNA project: the Mammalian Gene Collection (MGC). Gerhard DS, et al. Genome Res, 2004 Oct. PMID 15489334.

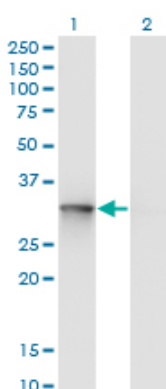
Images



Antibody Reactive Against Recombinant Protein. Western Blot detection against Immunogen (51.92 KDa) .



UBE2R2 monoclonal antibody (M01), clone 5E7 Western Blot analysis of UBE2R2 expression in Jurkat (Cat # AT4443a)

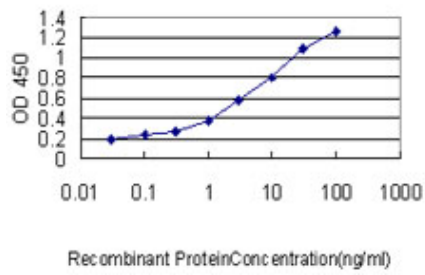
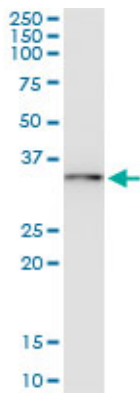


Western Blot analysis of UBE2R2 expression in transfected 293T cell line by UBE2R2 monoclonal antibody (M01), clone 5E7.

Lane 1: UBE2R2 transfected lysate (Predicted MW: 27.2 KDa).

Lane 2: Non-transfected lysate.

Immunoprecipitation of UBE2R2 transfected lysate using anti-UBE2R2 monoclonal antibody and Protein A Magnetic Bead ([U0007](#)), and immunoblotted with UBE2R2 monoclonal antibody.



Detection limit for recombinant GST tagged UBE2R2 is approximately 0.1 ng/ml as a capture antibody.

Please note: All products are 'FOR RESEARCH USE ONLY. NOT FOR USE IN DIAGNOSTIC OR THERAPEUTIC PROCEDURES'.