

UBE2T Antibody (monoclonal) (M01)

Mouse monoclonal antibody raised against a full length recombinant UBE2T.

Catalog # AT4444a

Product Information

Application	WB, IP
Primary Accession	Q9NPD8
Other Accession	BC004152
Reactivity	Human
Host	mouse
Clonality	monoclonal
Isotype	IgG2b kappa
Clone Names	1E12-4A3
Calculated MW	22521

Additional Information

Gene ID	29089
Other Names	Ubiquitin-conjugating enzyme E2 T, Cell proliferation-inducing gene 50 protein, Ubiquitin carrier protein T, Ubiquitin-protein ligase T, UBE2T
Target/Specificity	UBE2T (AAH04152, 1 a.a. ~ 197 a.a) full-length recombinant protein with GST tag. MW of the GST tag alone is 26 KDa.
Dilution	WB~~1:500~1000 IP~~N/A
Format	Clear, colorless solution in phosphate buffered saline, pH 7.2 .
Storage	Store at -20°C or lower. Aliquot to avoid repeated freezing and thawing.
Precautions	UBE2T Antibody (monoclonal) (M01) is for research use only and not for use in diagnostic or therapeutic procedures.

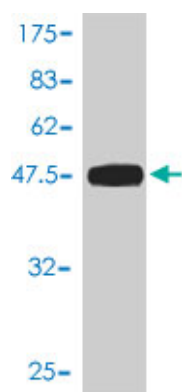
Background

The covalent conjugation of ubiquitin to proteins regulates diverse cellular pathways and proteins. Ubiquitin is transferred to a target protein through a concerted action of a ubiquitin-activating enzyme (E1), a ubiquitin-conjugating enzyme (E2), such as UBE2T, and a ubiquitin ligase (E3) (Machida et al., 2006 [PubMed 16916645]).

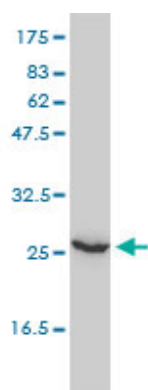
References

1.Hypoxia disrupts the Fanconi anemia pathway and sensitizes cells to chemotherapy through regulation of UBE2T.Ramaekers CH, van den Beucken T, Meng A, Kassam S, Thoms J, Bristow RG, Wouters BG.Radiother

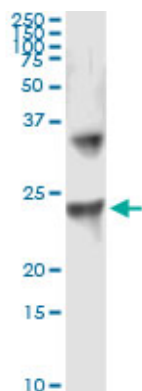
Images



Antibody Reactive Against Recombinant Protein. Western Blot detection against Immunogen (47.41 KDa) .



UBE2T monoclonal antibody (M01), clone 1E12-4A3
Western Blot analysis of UBE2T expression in HeLa (Cat # AT4444a)



Immunoprecipitation of UBE2T transfected lysate using anti-UBE2T monoclonal antibody and Protein A Magnetic Bead ([U0007](#)), and immunoblotted with UBE2T MaxPab rabbit polyclonal antibody.

Please note: All products are 'FOR RESEARCH USE ONLY. NOT FOR USE IN DIAGNOSTIC OR THERAPEUTIC PROCEDURES'.