

UBE4A Antibody (monoclonal) (M08)

Mouse monoclonal antibody raised against a partial recombinant UBE4A.

Catalog # AT4446a

Product Information

Application	WB, IF, E
Primary Accession	Q14139
Other Accession	NM_004788
Reactivity	Human, Mouse, Rat
Host	mouse
Clonality	monoclonal
Isotype	IgG2a Kappa
Clone Names	1G8
Calculated MW	122561

Additional Information

Gene ID	9354
Other Names	Ubiquitin conjugation factor E4 A, 632-, UBE4A (HGNC:12499)
Target/Specificity	UBE4A (NP_004779, 974 a.a. ~ 1073 a.a) partial recombinant protein with GST tag. MW of the GST tag alone is 26 KDa.
Dilution	WB~~1:500~1000 IF~~1:50~200 E~~N/A
Format	Clear, colorless solution in phosphate buffered saline, pH 7.2 .
Storage	Store at -20°C or lower. Aliquot to avoid repeated freezing and thawing.
Precautions	UBE4A Antibody (monoclonal) (M08) is for research use only and not for use in diagnostic or therapeutic procedures.

Background

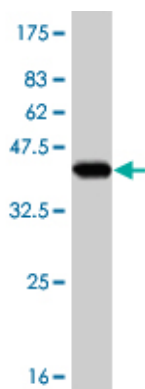
The modification of proteins with ubiquitin is an important cellular mechanism for targeting abnormal or short-lived proteins for degradation. Ubiquitination involves at least three classes of enzymes: ubiquitin-activating enzymes, or E1s, ubiquitin-conjugating enzymes, or E2s, and ubiquitin-protein ligases, or E3s. This gene encodes an additional conjugation factor, E4, which is involved in multiubiquitin chain assembly.

References

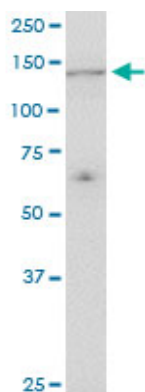
CBP and p300 are cytoplasmic E4 polyubiquitin ligases for p53. Shi D, et al. Proc Natl Acad Sci U S A, 2009 Sep 22. PMID 19805293. Autoantibodies against ubiquitination factor E4A (UBE4A) are associated with

severity of Crohn's disease. Sakiyama T, et al. Inflamm Bowel Dis, 2008 Mar. PMID 18069675.[Differential expression of USP2, USP14 and UBE4A between ovarian serous cystadenocarcinoma and adjacent normal tissues] Yang Y, et al. Xi Bao Yu Fen Zi Mian Yi Xue Za Zhi, 2007 Jun. PMID 17553343.Large-scale mapping of human protein-protein interactions by mass spectrometry. Ewing RM, et al. Mol Syst Biol, 2007. PMID 17353931.Ufd2, a novel autoantigen in scleroderma, regulates sister chromatid separation. Spinette S, et al. Cell Cycle, 2004 Dec. PMID 15611659.

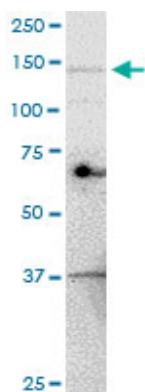
Images



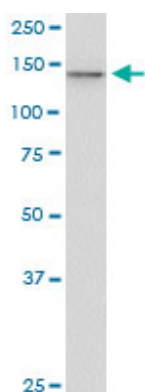
Antibody Reactive Against Recombinant Protein. Western Blot detection against Immunogen (36.63 KDa) .



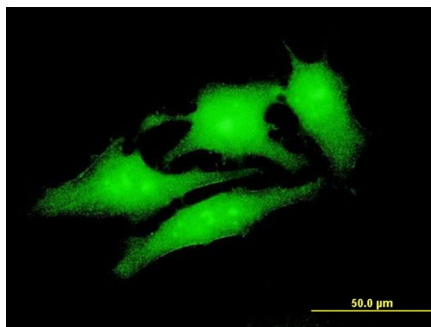
UBE4A monoclonal antibody (M08), clone 1G8. Western Blot analysis of UBE4A expression in PC-12.



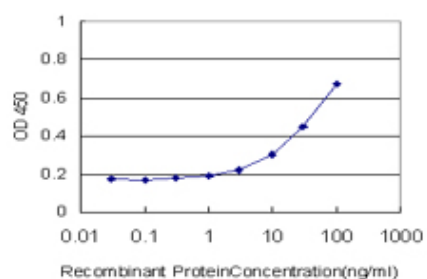
UBE4A monoclonal antibody (M08), clone 1G8. Western Blot analysis of UBE4A expression in NIH/3T3.



UBE4A monoclonal antibody (M08), clone 1G8. Western Blot analysis of UBE4A expression in K-562.



Immunofluorescence of monoclonal antibody to UBE4A on HeLa cell . [antibody concentration 10 ug/ml]



Detection limit for recombinant GST tagged UBE4A is approximately 3ng/ml as a capture antibody.

Please note: All products are 'FOR RESEARCH USE ONLY. NOT FOR USE IN DIAGNOSTIC OR THERAPEUTIC PROCEDURES'.