

VCL Antibody (monoclonal) (M01)

Mouse monoclonal antibody raised against a full length recombinant VCL.

Catalog # AT4505a

Product Information

Application	WB, IF
Primary Accession	P18206
Other Accession	BC039174
Reactivity	Human
Host	mouse
Clonality	monoclonal
Isotype	IgG1 kappa
Clone Names	2C6-1B5
Calculated MW	123799

Additional Information

Gene ID	7414
Other Names	Vinculin, Metavinculin, MV, VCL
Target/Specificity	VCL (AAH39174.1, 1 a.a. ~ 1066 a.a) full-length recombinant protein with GST tag. MW of the GST tag alone is 26 KDa.
Dilution	WB~~1:500~1000 IF~~1:50~200
Format	Clear, colorless solution in phosphate buffered saline, pH 7.2 .
Storage	Store at -20°C or lower. Aliquot to avoid repeated freezing and thawing.
Precautions	VCL Antibody (monoclonal) (M01) is for research use only and not for use in diagnostic or therapeutic procedures.

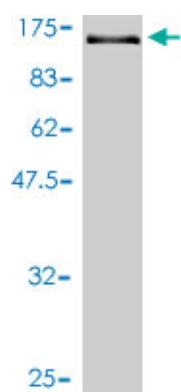
Background

Vinculin is a cytoskeletal protein associated with cell-cell and cell-matrix junctions, where it is thought to function as one of several interacting proteins involved in anchoring F-actin to the membrane. Defects in VCL are the cause of cardiomyopathy dilated type 1W. Dilated cardiomyopathy is a disorder characterized by ventricular dilation and impaired systolic function, resulting in congestive heart failure and arrhythmia. Multiple alternatively spliced transcript variants have been found for this gene, but the biological validity of some variants has not been determined.

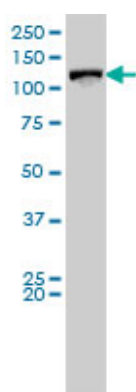
References

1.Ascorbylperoxide contaminating parenteral nutrition perturbs the lipid metabolism in newborn guinea

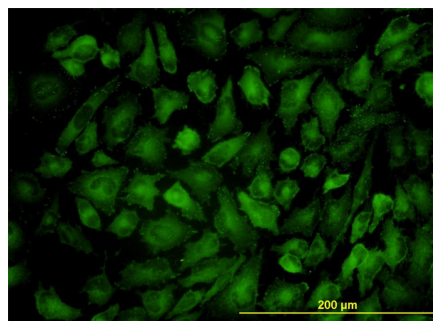
Images



Antibody Reactive Against Recombinant Protein. Western Blot detection against Immunogen (143 KDa) .



VCL monoclonal antibody (M01), clone 2C6-1B5 Western Blot analysis of VCL expression in HeLa (Cat # AT4505a)



Immunofluorescence of monoclonal antibody to VCL on HeLa cell. [antibody concentration 10 ug/ml]

Please note: All products are 'FOR RESEARCH USE ONLY. NOT FOR USE IN DIAGNOSTIC OR THERAPEUTIC PROCEDURES'.