

## WDR20 Antibody (monoclonal) (M01)

Mouse monoclonal antibody raised against a full length recombinant WDR20.

Catalog # AT4529a

### Product Information

---

<b>Application</b>	WB
<b>Primary Accession</b>	<a href="#">Q8TBZ3</a>
<b>Other Accession</b>	<a href="#">BC028387</a>
<b>Reactivity</b>	Human
<b>Host</b>	mouse
<b>Clonality</b>	monoclonal
<b>Isotype</b>	IgG1 Kappa
<b>Clone Names</b>	1D10
<b>Calculated MW</b>	62893

### Additional Information

---

<b>Gene ID</b>	91833
<b>Other Names</b>	WD repeat-containing protein 20, Protein DMR, WDR20
<b>Target/Specificity</b>	WDR20 (AAH28387, 1 a.a. ~ 569 a.a) full-length recombinant protein with GST tag. MW of the GST tag alone is 26 KDa.
<b>Dilution</b>	WB~~1:500~1000
<b>Format</b>	Clear, colorless solution in phosphate buffered saline, pH 7.2 .
<b>Storage</b>	Store at -20°C or lower. Aliquot to avoid repeated freezing and thawing.
<b>Precautions</b>	WDR20 Antibody (monoclonal) (M01) is for research use only and not for use in diagnostic or therapeutic procedures.

### Background

---

This gene encodes a WD repeat-containing protein. Multiple alternatively spliced transcript variants have been found for this gene, but the full-length nature of some variants has not been defined.

### References

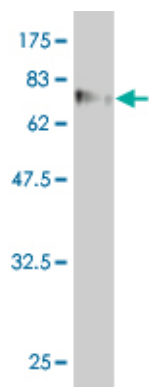
---

Variation at the NFATC2 Locus Increases the Risk of Thiazolinedinedione-Induced Edema in the Diabetes REduction Assessment with ramipril and rosiglitazone Medication (DREAM) Study. Bailey SD, et al. Diabetes Care, 2010 Jul 13. PMID 20628086. WDR20 regulates activity of the USP12 x UAF1 deubiquitinating enzyme complex. Kee Y, et al. J Biol Chem, 2010 Apr 9. PMID 20147737. Gene-centric association signals for lipids and apolipoproteins identified via the HumanCVD BeadChip. Talmud PJ, et al. Am J Hum Genet, 2009 Nov.

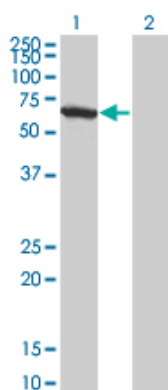
PMID 19913121. Defining the human deubiquitinating enzyme interaction landscape. Sowa ME, et al. Cell, 2009 Jul 23. PMID 19615732. Toward a confocal subcellular atlas of the human proteome. Barbe L, et al. Mol Cell Proteomics, 2008 Mar. PMID 18029348.

## Images

---



Antibody Reactive Against Recombinant Protein. Western Blot detection against Immunogen (88.33 KDa) .



Western Blot analysis of WDR20 expression in transfected 293T cell line by WDR20 monoclonal antibody (M01), clone 1D10.

Lane 1: WDR20 transfected lysate(62.9 KDa).  
Lane 2: Non-transfected lysate.

Please note: All products are 'FOR RESEARCH USE ONLY. NOT FOR USE IN DIAGNOSTIC OR THERAPEUTIC PROCEDURES'.