

# WDR58 Antibody (monoclonal) (M01)

Mouse monoclonal antibody raised against a partial recombinant WDR58.

Catalog # AT4534a

## Product Information

---

<b>Application</b>	WB, IHC, E
<b>Primary Accession</b>	<a href="#">Q86W42</a>
<b>Other Accession</b>	<a href="#">NM_024339</a>
<b>Reactivity</b>	Human, Rat
<b>Host</b>	mouse
<b>Clonality</b>	monoclonal
<b>Isotype</b>	IgG1 Kappa
<b>Clone Names</b>	1F6
<b>Calculated MW</b>	37535

## Additional Information

---

<b>Gene ID</b>	79228
<b>Other Names</b>	THO complex subunit 6 homolog, Functional spliceosome-associated protein 35, fSAP35, WD repeat-containing protein 58, THOC6, WDR58
<b>Target/Specificity</b>	WDR58 (NP_077315, 71 a.a. ~ 180 a.a) partial recombinant protein with GST tag. MW of the GST tag alone is 26 KDa.
<b>Dilution</b>	WB~~1:500~1000 IHC~~1:100~500 E~~N/A
<b>Format</b>	Clear, colorless solution in phosphate buffered saline, pH 7.2 .
<b>Storage</b>	Store at -20°C or lower. Aliquot to avoid repeated freezing and thawing.
<b>Precautions</b>	WDR58 Antibody (monoclonal) (M01) is for research use only and not for use in diagnostic or therapeutic procedures.

## References

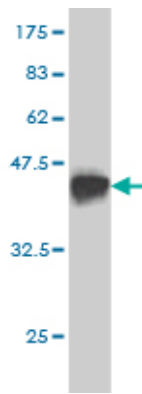
---

1.Adaptor Aly and co-adaptor Thoc5 function in the Tap-p15-mediated nuclear export of HSP70 mRNA.Katahira J, Inoue H, Hurt E, Yoneda Y.EMBO J. 2009 Mar 4;28(5):556-67. Epub 2009 Jan 22.

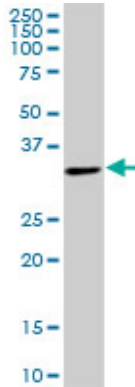
## Images

---

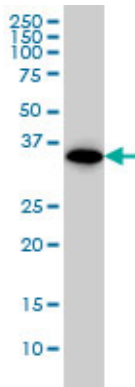
Antibody Reactive Against Recombinant Protein.Western Blot detection against Immunogen (37.84 KDa) .



WDR58 monoclonal antibody (M01), clone 1F6. Western Blot analysis of WDR58 expression in PC-12 ( (Cat # AT4534a )



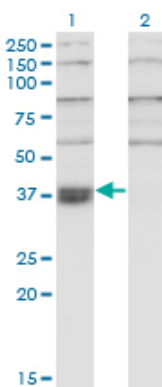
WDR58 monoclonal antibody (M01), clone 1F6 Western Blot analysis of WDR58 expression in A-431 ( (Cat # AT4534a )



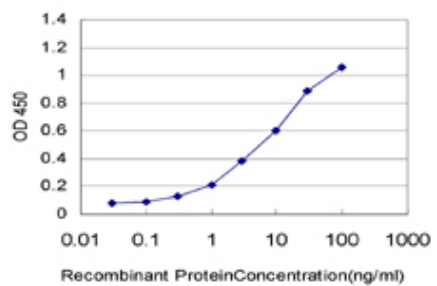
Western Blot analysis of THOC6 expression in transfected 293T cell line by THOC6 monoclonal antibody (M01), clone 1F6.

Lane 1: THOC6 transfected lysate (Predicted MW: 37.5 KDa).

Lane 2: Non-transfected lysate.



Immunoperoxidase of monoclonal antibody to WDR58 on formalin-fixed paraffin-embedded human small Intestine. [antibody concentration 3 ug/ml]



Detection limit for recombinant GST tagged WDR58 is approximately 0.3ng/ml as a capture antibody.

Please note: All products are 'FOR RESEARCH USE ONLY. NOT FOR USE IN DIAGNOSTIC OR THERAPEUTIC PROCEDURES'.