

WIPI1 Antibody (monoclonal) (M02)

Mouse monoclonal antibody raised against a partial recombinant WIPI1.

Catalog # AT4539a

Product Information

Application	WB, E
Primary Accession	Q5MNZ9
Other Accession	NM_017983
Reactivity	Human, Rat
Host	mouse
Clonality	monoclonal
Isotype	IgG2b Kappa
Clone Names	3C1
Calculated MW	48673

Additional Information

Gene ID	55062
Other Names	WD repeat domain phosphoinositide-interacting protein 1, WIPI-1, Atg18 protein homolog, WD40 repeat protein interacting with phosphoinositides of 49 kDa, WIPI 49 kDa, WIPI1, WIPI49
Target/Specificity	WIPI1 (NP_060453.2, 348 a.a. ~ 445 a.a) partial recombinant protein with GST tag. MW of the GST tag alone is 26 KDa.
Dilution	WB~~1:500~1000 E~~N/A
Format	Clear, colorless solution in phosphate buffered saline, pH 7.2 .
Storage	Store at -20°C or lower. Aliquot to avoid repeated freezing and thawing.
Precautions	WIPI1 Antibody (monoclonal) (M02) is for research use only and not for use in diagnostic or therapeutic procedures.

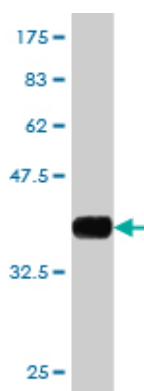
Background

WD40 repeat proteins are key components of many essential biologic functions. They regulate the assembly of multiprotein complexes by presenting a beta-propeller platform for simultaneous and reversible protein-protein interactions. Members of the WIPI subfamily of WD40 repeat proteins, such as WIPI1, have a 7-bladed propeller structure and contain a conserved motif for interaction with phospholipids (Proikas-Cezanne et al., 2004 [PubMed 15602573]).

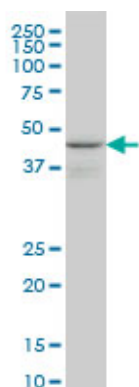
References

Forty-three loci associated with plasma lipoprotein size, concentration, and cholesterol content in genome-wide analysis. Chasman DI, et al. PLoS Genet, 2009 Nov. PMID 19936222. Human WIPI-1 puncta-formation: a novel assay to assess mammalian autophagy. Proikas-Cezanne T, et al. FEBS Lett, 2007 Jul 24. PMID 17618624. A human protein-protein interaction network: a resource for annotating the proteome. Stelzl U, et al. Cell, 2005 Sep 23. PMID 16169070. WIPI-1alpha (WIPI49), a member of the novel 7-bladed WIPI protein family, is aberrantly expressed in human cancer and is linked to starvation-induced autophagy. Proikas-Cezanne T, et al. Oncogene, 2004 Dec 16. PMID 15602573. The status, quality, and expansion of the NIH full-length cDNA project: the Mammalian Gene Collection (MGC). Gerhard DS, et al. Genome Res, 2004 Oct. PMID 15489334.

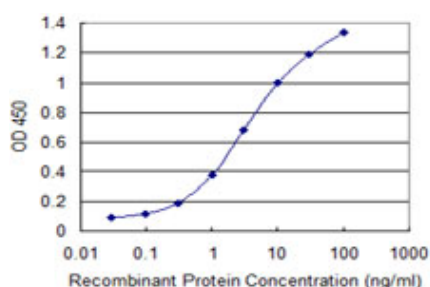
Images



Antibody Reactive Against Recombinant Protein. Western Blot detection against Immunogen (36.52 KDa) .



WIPI1 monoclonal antibody (M02), clone 3C1 Western Blot analysis of WIPI1 expression in PC-12 ((Cat # AT4539a)



Detection limit for recombinant GST tagged WIPI1 is 0.03 ng/ml as a capture antibody.

Please note: All products are 'FOR RESEARCH USE ONLY. NOT FOR USE IN DIAGNOSTIC OR THERAPEUTIC PROCEDURES'.