

## YWHAG Antibody (monoclonal) (M02)

Mouse monoclonal antibody raised against a partial recombinant YWHAG.

Catalog # AT4560a

### Product Information

---

<b>Application</b>	WB, E
<b>Primary Accession</b>	<a href="#">P61981</a>
<b>Other Accession</b>	<a href="#">NM_012479</a>
<b>Reactivity</b>	Human, Mouse, Rat
<b>Host</b>	mouse
<b>Clonality</b>	monoclonal
<b>Isotype</b>	IgG2b Kappa
<b>Clone Names</b>	6A10
<b>Calculated MW</b>	28303

### Additional Information

---

<b>Gene ID</b>	7532
<b>Other Names</b>	14-3-3 protein gamma, Protein kinase C inhibitor protein 1, KCIP-1, 14-3-3 protein gamma, N-terminally processed, YWHAG
<b>Target/Specificity</b>	YWHAG (NP_036611, 70 a.a. ~ 169 a.a) partial recombinant protein with GST tag. MW of the GST tag alone is 26 KDa.
<b>Dilution</b>	WB~~1:500~1000 E~~N/A
<b>Format</b>	Clear, colorless solution in phosphate buffered saline, pH 7.2 .
<b>Storage</b>	Store at -20°C or lower. Aliquot to avoid repeated freezing and thawing.
<b>Precautions</b>	YWHAG Antibody (monoclonal) (M02) is for research use only and not for use in diagnostic or therapeutic procedures.

### Background

---

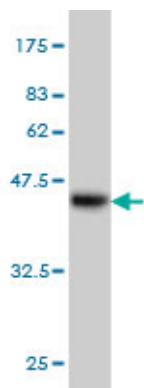
This gene product belongs to the 14-3-3 family of proteins which mediate signal transduction by binding to phosphoserine-containing proteins. This highly conserved protein family is found in both plants and mammals, and this protein is 100% identical to the rat ortholog. It is induced by growth factors in human vascular smooth muscle cells, and is also highly expressed in skeletal and heart muscles, suggesting an important role for this protein in muscle tissue. It has been shown to interact with RAF1 and protein kinase C, proteins involved in various signal transduction pathways.

### References

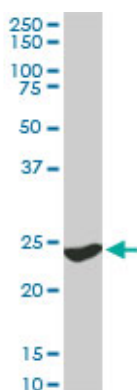
---

Centrosome-related genes, genetic variation, and risk of breast cancer. Olson JE, et al. Breast Cancer Res Treat, 2010 May 28. PMID 20508983. The expression of seven 14-3-3 isoforms in human meningioma. Liu Y, et al. Brain Res, 2010 Jun 8. PMID 20388496. Sex-specific proteome differences in the anterior cingulate cortex of schizophrenia. Martins-de-Souza D, et al. J Psychiatr Res, 2010 Apr 8. PMID 20381070. Zebrafish gene knockdowns imply roles for human YWHAG in infantile spasms and cardiomegaly. Komoike Y, et al. Genesis, 2010 Apr. PMID 20146355. Three-way interaction between 14-3-3 proteins, the N-terminal region of tyrosine hydroxylase, and negatively charged membranes. Halskau ? Jr, et al. J Biol Chem, 2009 Nov 20. PMID 19801645.

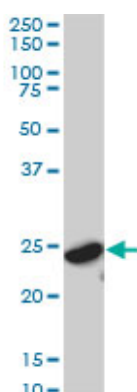
## Images



Antibody Reactive Against Recombinant Protein. Western Blot detection against Immunogen (36.74 KDa) .

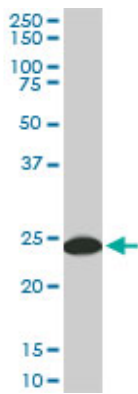


YWHAG monoclonal antibody (M02), clone 6A10. Western Blot analysis of YWHAG expression in PC-12 ( (Cat # AT4560a )

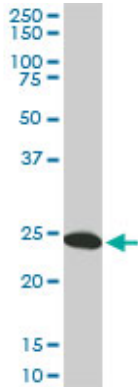


YWHAG monoclonal antibody (M02), clone 6A10. Western Blot analysis of YWHAG expression in IMR-32 ( (Cat # AT4560a )

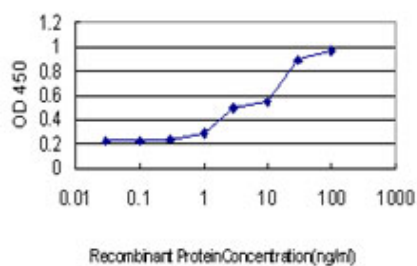
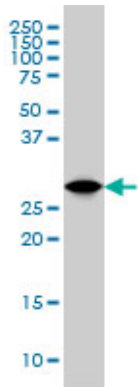
YWHAG monoclonal antibody (M02), clone 6A10. Western Blot analysis of YWHAG expression in Raw 264.7 ( (Cat # AT4560a )



YWHAG monoclonal antibody (M02), clone 6A10. Western Blot analysis of YWHAG expression in NIH/3T3 (Cat # AT4560a )



YWHAG monoclonal antibody (M02), clone 6A10 Western Blot analysis of YWHAG expression in K-562 (Cat # AT4560a )



Detection limit for recombinant GST tagged YWHAG is approximately 0.3ng/ml as a capture antibody.

Please note: All products are 'FOR RESEARCH USE ONLY. NOT FOR USE IN DIAGNOSTIC OR THERAPEUTIC PROCEDURES'.