

YWHAH Antibody (monoclonal) (M04)

Mouse monoclonal antibody raised against a partial recombinant YWHAH.

Catalog # AT4561a

Product Information

Application	WB, E
Primary Accession	Q04917
Other Accession	BC003047
Reactivity	Human
Host	mouse
Clonality	monoclonal
Isotype	IgG2a Kappa
Clone Names	6A12
Calculated MW	28219

Additional Information

Gene ID	7533
Other Names	14-3-3 protein eta, Protein AS1, YWHAH, YWHA1
Target/Specificity	YWHAH (AAH03047, 71 a.a. ~ 170 a.a) partial recombinant protein with GST tag. MW of the GST tag alone is 26 KDa.
Dilution	WB~~1:500~1000 E~~N/A
Format	Clear, colorless solution in phosphate buffered saline, pH 7.2 .
Storage	Store at -20°C or lower. Aliquot to avoid repeated freezing and thawing.
Precautions	YWHAH Antibody (monoclonal) (M04) is for research use only and not for use in diagnostic or therapeutic procedures.

Background

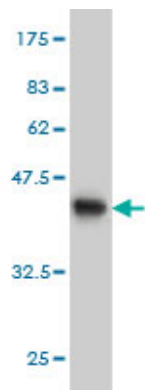
This gene product belongs to the 14-3-3 family of proteins which mediate signal transduction by binding to phosphoserine-containing proteins. This highly conserved protein family is found in both plants and mammals, and this protein is 99% identical to the mouse, rat and bovine orthologs. This gene contains a 7 bp repeat sequence in its 5' UTR, and changes in the number of this repeat have been associated with early-onset schizophrenia and psychotic bipolar disorder.

References

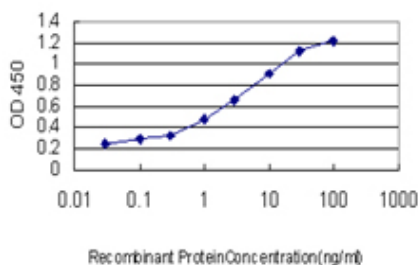
The expression of seven 14-3-3 isoforms in human meningioma. Liu Y, et al. Brain Res, 2010 Jun 8. PMID 20388496. Histone deacetylase 7 controls endothelial cell growth through modulation of beta-catenin.

Margariti A, et al. Circ Res, 2010 Apr 16. PMID 20224040. Defining the human deubiquitinating enzyme interaction landscape. Sowa ME, et al. Cell, 2009 Jul 23. PMID 19615732. Identification of five novel 14-3-3 isoforms interacting with the GPIb-IX complex in platelets. Mangin PH, et al. J Thromb Haemost, 2009 Sep. PMID 19558434. Phosphorylation-dependent binding of 14-3-3 terminates signalling by the Gab2 docking protein. Brummer T, et al. EMBO J, 2008 Sep 3. PMID 19172738.

Images



Antibody Reactive Against Recombinant Protein. Western Blot detection against Immunogen (36.63 KDa) .



Detection limit for recombinant GST tagged YWHAH is approximately 0.1 ng/ml as a capture antibody.

Please note: All products are 'FOR RESEARCH USE ONLY. NOT FOR USE IN DIAGNOSTIC OR THERAPEUTIC PROCEDURES'.