

YY1 Antibody (monoclonal) (M02)

Mouse monoclonal antibody raised against a partial recombinant YY1.

Catalog # AT4563a

Product Information

Application	WB, IHC, IF, E
Primary Accession	P25490
Other Accession	NM_003403
Reactivity	Human
Host	mouse
Clonality	monoclonal
Isotype	IgG1 Kappa
Clone Names	4A5
Calculated MW	44713

Additional Information

Gene ID	7528
Other Names	Transcriptional repressor protein YY1, Delta transcription factor, INO80 complex subunit S, NF-E1, Yin and yang 1, YY-1, YY1, INO80S
Target/Specificity	YY1 (NP_003394, 221 a.a. ~ 320 a.a) partial recombinant protein with GST tag. MW of the GST tag alone is 26 KDa.
Dilution	WB~~1:500~1000 IHC~~1:100~500 IF~~1:50~200 E~~N/A
Format	Clear, colorless solution in phosphate buffered saline, pH 7.2 .
Storage	Store at -20°C or lower. Aliquot to avoid repeated freezing and thawing.
Precautions	YY1 Antibody (monoclonal) (M02) is for research use only and not for use in diagnostic or therapeutic procedures.

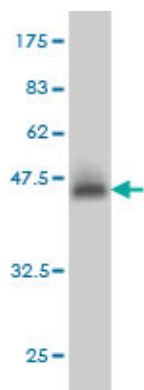
Background

YY1 is a ubiquitously distributed transcription factor belonging to the GLI-Kruppel class of zinc finger proteins. The protein is involved in repressing and activating a diverse number of promoters. YY1 may direct histone deacetylases and histone acetyltransferases to a promoter in order to activate or repress the promoter, thus implicating histone modification in the function of YY1.

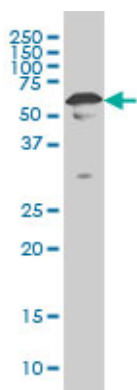
References

1. Gene expression profiling of human hepatoblastoma using archived formalin-fixed and paraffin-embedded tissues. Shin E, Lee KB, Park SY, Kim SH, Ryu HS, Park YN, Yu E, Jang JJ. Virchows Arch.

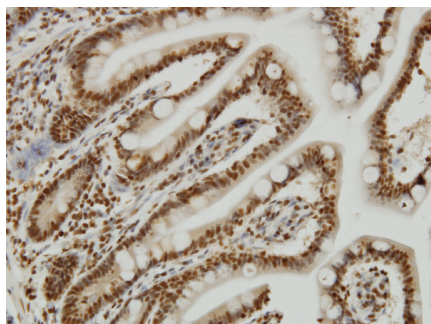
Images



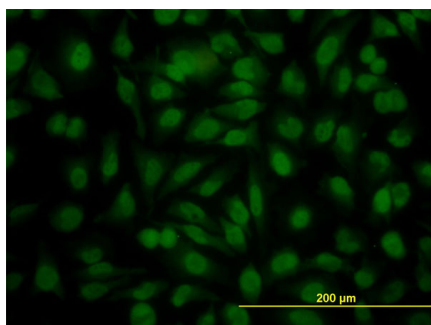
Antibody Reactive Against Recombinant Protein. Western Blot detection against Immunogen (36.74 KDa) .



YY1 monoclonal antibody (M02), clone 4A5 Western Blot analysis of YY1 expression in HeLa S3 NE ((Cat # AT4563a)

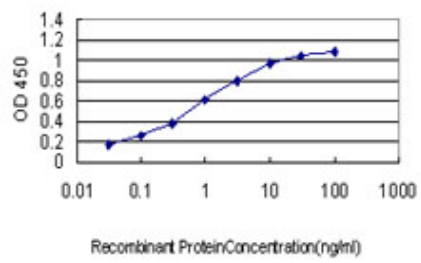


Immunoperoxidase of monoclonal antibody to YY1 on formalin-fixed paraffin-embedded human small Intestine. [antibody concentration 3 ug/ml]



Immunofluorescence of monoclonal antibody to YY1 on HeLa cell. [antibody concentration 10 ug/ml]

Detection limit for recombinant GST tagged YY1 is approximately 0.03ng/ml as a capture antibody.



Please note: All products are 'FOR RESEARCH USE ONLY. NOT FOR USE IN DIAGNOSTIC OR THERAPEUTIC PROCEDURES'.