

## ZFH1B Antibody (monoclonal) (M03)

Mouse monoclonal antibody raised against a partial recombinant ZFH1B.

Catalog # AT4572a

### Product Information

---

<b>Application</b>	WB, IF
<b>Primary Accession</b>	<a href="#">O60315</a>
<b>Other Accession</b>	<a href="#">NM_014795.2</a>
<b>Reactivity</b>	Human
<b>Host</b>	mouse
<b>Clonality</b>	monoclonal
<b>Isotype</b>	IgG2a Kappa
<b>Clone Names</b>	2D12
<b>Calculated MW</b>	136447

### Additional Information

---

<b>Gene ID</b>	9839
<b>Other Names</b>	Zinc finger E-box-binding homeobox 2, Smad-interacting protein 1, SMADIP1, Zinc finger homeobox protein 1b, ZEB2, KIAA0569, SIP1, ZFH1B, ZFX1B
<b>Target/Specificity</b>	ZFH1B (NP_055610.1, 1115 a.a. ~ 1214 a.a) partial recombinant protein with GST tag. MW of the GST tag alone is 26 KDa.
<b>Dilution</b>	WB~~1:500~1000 IF~~1:50~200
<b>Format</b>	Clear, colorless solution in phosphate buffered saline, pH 7.2 .
<b>Storage</b>	Store at -20°C or lower. Aliquot to avoid repeated freezing and thawing.
<b>Precautions</b>	ZFH1B Antibody (monoclonal) (M03) is for research use only and not for use in diagnostic or therapeutic procedures.

### Background

---

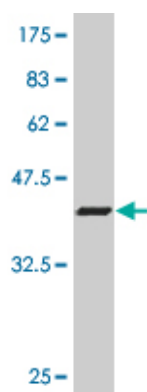
The protein encoded by this gene is a member of the Zfh1 family of 2-handed zinc finger/homeodomain proteins. It is located in the nucleus and functions as a DNA-binding transcriptional repressor that interacts with activated SMADs. Mutations in this gene are associated with Hirschsprung disease/Mowat-Wilson syndrome. Alternatively spliced transcript variants have been found for this gene.

### References

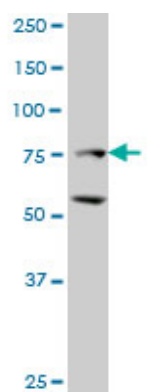
---

1.The tumor-promoting activity of 2-acetylaminofluorene is associated with disruption of the p53 signaling pathway and the balance between apoptosis and cell proliferation.Pogribny IP, Muskhelishvili L, Tryndyak

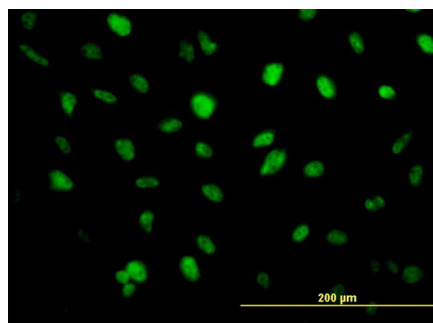
## Images



Antibody Reactive Against Recombinant Protein. Western Blot detection against Immunogen (37.11 KDa) .



ZFHX1B monoclonal antibody (M03), clone 2D12. Western Blot analysis of ZFHX1B expression in HeLa S3 NE ( (Cat # AT4572a )



Immunofluorescence of monoclonal antibody to ZFHX1B on HeLa cell. [antibody concentration 10 ug/ml]

Please note: All products are 'FOR RESEARCH USE ONLY. NOT FOR USE IN DIAGNOSTIC OR THERAPEUTIC PROCEDURES'.