

## ZNF346 Antibody (monoclonal) (M01)

Mouse monoclonal antibody raised against a partial recombinant ZNF346.

Catalog # AT4629a

### Product Information

---

<b>Application</b>	WB, E
<b>Primary Accession</b>	<a href="#">Q9UL40</a>
<b>Other Accession</b>	<a href="#">BC007775</a>
<b>Reactivity</b>	Human
<b>Host</b>	mouse
<b>Clonality</b>	monoclonal
<b>Isotype</b>	IgG1 Kappa
<b>Clone Names</b>	2D10
<b>Calculated MW</b>	32933

### Additional Information

---

<b>Gene ID</b>	23567
<b>Other Names</b>	Zinc finger protein 346, Just another zinc finger protein, ZNF346, JAZ
<b>Target/Specificity</b>	ZNF346 (AAH07775, 133 a.a. ~ 232 a.a) partial recombinant protein with GST tag. MW of the GST tag alone is 26 KDa.
<b>Dilution</b>	WB~~1:500~1000 E~~N/A
<b>Format</b>	Clear, colorless solution in phosphate buffered saline, pH 7.2 .
<b>Storage</b>	Store at -20°C or lower. Aliquot to avoid repeated freezing and thawing.
<b>Precautions</b>	ZNF346 Antibody (monoclonal) (M01) is for research use only and not for use in diagnostic or therapeutic procedures.

### Background

---

The protein encoded by this gene is a nucleolar, zinc finger protein that preferentially binds to double-stranded (ds) RNA or RNA/DNA hybrids, rather than DNA alone. Mutational studies indicate that the zinc finger domains are not only essential for dsRNA binding, but are also required for its nucleolar localization. The encoded protein may be involved in cell growth and survival.

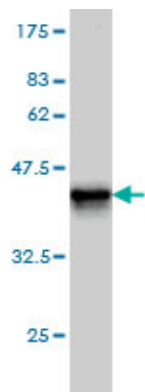
### References

---

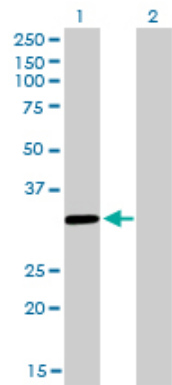
Toward a confocal subcellular atlas of the human proteome. Barbe L, et al. Mol Cell Proteomics, 2008 Mar. PMID 18029348. The LIFEdb database in 2006. Mehrle A, et al. Nucleic Acids Res, 2006 Jan 1. PMID 16381901. From ORFeome to biology: a functional genomics pipeline. Wiemann S, et al. Genome Res, 2004

Oct. PMID 15489336.The status, quality, and expansion of the NIH full-length cDNA project: the Mammalian Gene Collection (MGC). Gerhard DS, et al. Genome Res, 2004 Oct. PMID 15489334.Nucleocytoplasmic shuttling of JAZ, a new cargo protein for exportin-5. Chen T, et al. Mol Cell Biol, 2004 Aug. PMID 15254228.

Images

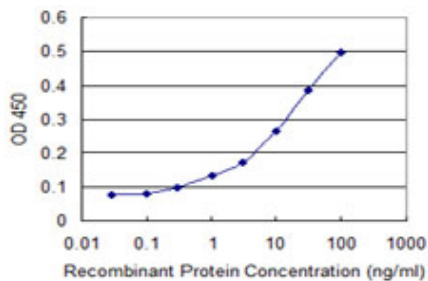


Antibody Reactive Against Recombinant Protein.Western Blot detection against Immunogen (36.63 KDa) .

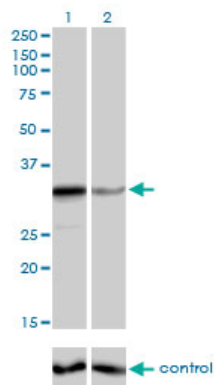


Western Blot analysis of ZNF346 expression in transfected 293T cell line by ZNF346 monoclonal antibody (M01), clone 2D10.

Lane 1: ZNF346 transfected lysate(32.9 KDa).  
Lane 2: Non-transfected lysate.



Detection limit for recombinant GST tagged ZNF346 is approximately 0.3ng/ml as a capture antibody.



Western blot analysis of ZNF346 over-expressed 293 cell line, cotransfected with ZNF346 Validated Chimera RNAi ( Cat # AT4629a )

Please note: All products are 'FOR RESEARCH USE ONLY. NOT FOR USE IN DIAGNOSTIC OR THERAPEUTIC PROCEDURES'.