

ZNF622 Antibody (monoclonal) (M02)

Mouse monoclonal antibody raised against a partial recombinant ZNF622.

Catalog # AT4642a

Product Information

Application	WB, IF, E
Primary Accession	Q969S3
Other Accession	NM_033414
Reactivity	Human, Mouse, Rat
Host	mouse
Clonality	monoclonal
Isotype	IgG1 Kappa
Clone Names	3C5
Calculated MW	54272

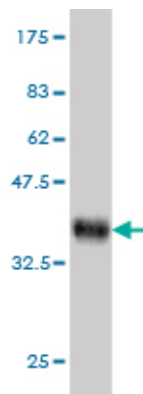
Additional Information

Gene ID	90441
Other Names	Zinc finger protein 622, Zinc finger-like protein 9, ZNF622, ZPR9
Target/Specificity	ZNF622 (NP_219482, 1 a.a. ~ 100 a.a) partial recombinant protein with GST tag. MW of the GST tag alone is 26 KDa.
Dilution	WB~~1:500~1000 IF~~1:50~200 E~~N/A
Format	Clear, colorless solution in phosphate buffered saline, pH 7.2 .
Storage	Store at -20°C or lower. Aliquot to avoid repeated freezing and thawing.
Precautions	ZNF622 Antibody (monoclonal) (M02) is for research use only and not for use in diagnostic or therapeutic procedures.

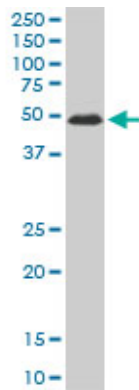
References

Nucleolar proteome dynamics. Andersen JS, et al. Nature, 2005 Jan 6. PMID 15635413. The status, quality, and expansion of the NIH full-length cDNA project: the Mammalian Gene Collection (MGC). Gerhard DS, et al. Genome Res, 2004 Oct. PMID 15489334. Enhancement of B-MYB transcriptional activity by ZPR9, a novel zinc finger protein. Seong HA, et al. J Biol Chem, 2003 Mar 14. PMID 12645566. Generation and initial analysis of more than 15,000 full-length human and mouse cDNA sequences. Strausberg RL, et al. Proc Natl Acad Sci U S A, 2002 Dec 24. PMID 12477932. Phosphorylation of a novel zinc-finger-like protein, ZPR9, by murine protein serine/threonine kinase 38 (MPK38). Seong HA, et al. Biochem J, 2002 Feb 1. PMID 11802789.

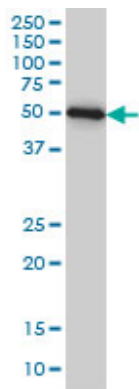
Images



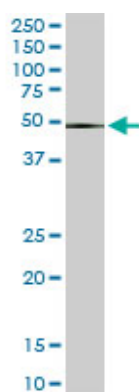
Antibody Reactive Against Recombinant Protein. Western Blot detection against Immunogen (36.74 KDa) .



ZNF622 monoclonal antibody (M02), clone 3C5. Western Blot analysis of ZNF622 expression in PC-12((Cat # AT4642a)

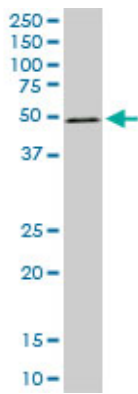


ZNF622 monoclonal antibody (M02), clone 3C5 Western Blot analysis of ZNF622 expression in HeLa S3 NE ((Cat # AT4642a)

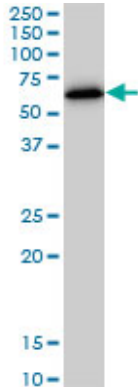


ZNF622 monoclonal antibody (M02), clone 3C5. Western Blot analysis of ZNF622 expression in Raw 264.7((Cat # AT4642a)

ZNF622 monoclonal antibody (M02), clone 3C5. Western Blot analysis of ZNF622 expression in NIH/3T3((Cat # AT4642a)

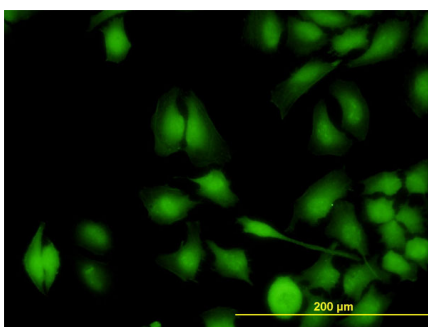
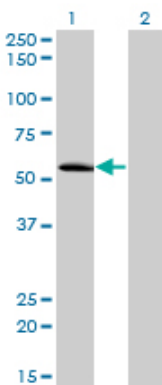


ZNF622 monoclonal antibody (M02), clone 3C5. Western Blot analysis of ZNF622 expression in K-562 (Cat # AT4642a)

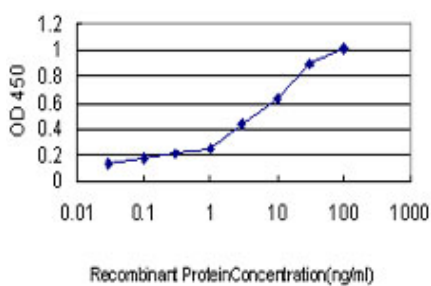


Western Blot analysis of ZNF622 expression in transfected 293T cell line by ZNF622 monoclonal antibody (M02), clone 3C5.

Lane 1: ZNF622 transfected lysate(54.3 KDa).
Lane 2: Non-transfected lysate.



Immunofluorescence of monoclonal antibody to ZNF622 on HeLa cell. [antibody concentration 10 ug/ml]



Detection limit for recombinant GST tagged ZNF622 is approximately 0.03ng/ml as a capture antibody.

Please note: All products are 'FOR RESEARCH USE ONLY. NOT FOR USE IN DIAGNOSTIC OR THERAPEUTIC PROCEDURES'.