

GLUL monoclonal antibody (M01A), clone 2B12

Purified Mouse Monoclonal Antibody (Mab)

Catalog # AT4666a

Product Information

Application	WB, E
Primary Accession	P15104
Reactivity	Human
Host	Mouse
Clonality	Monoclonal
Isotype	IgG2a Kappa
Clone Names	2B12
Calculated MW	42064

Additional Information

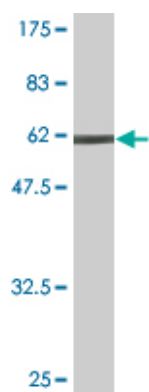
Gene ID	2752
Other Names	GLNS, GS, PIG43, PIG59
Target/Specificity	GLUL (AAH10037, 1 a.a. ~ 373 a.a) full-length recombinant protein with GST tag. MW of the GST tag alone is 26 KDa.
Dilution	WB~~1:1000 E~~N/A
Storage	Store at -20°C or lower. Aliquot to avoid repeated freezing and thawing.
Precautions	GLUL monoclonal antibody (M01A), clone 2B12 is for research use only and not for use in diagnostic or therapeutic procedures.

Background

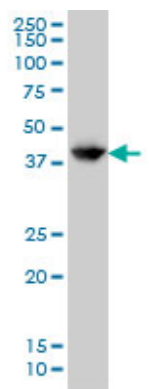
Glutamine is a main source of energy and is involved in cell proliferation, inhibition of apoptosis, and cell signaling (Haberle et al., 2005 [PubMed 16267323]). Fetal glutamine requirements are very high and depend largely on active glutamine synthesis and the release of glutamine into the fetal circulation by the placenta. Glutamine synthetase (EC 6.3.1.2), also called glutamate-ammonia ligase (GLUL), is expressed throughout the body and plays an important role in controlling body pH and in removing ammonia from the circulation. The enzyme clears L-glutamate, the major neurotransmitter in the central nervous system, from neuronal synapses (see references in Clancy et al., 1996 [PubMed 8975719]).[supplied by OMIM]

Images

Western Blot detection against Immunogen (66.77 KDa) .



GLUL monoclonal antibody (M01A), clone 2B12 Western Blot analysis of GLUL expression in HeLa.



Please note: All products are 'FOR RESEARCH USE ONLY. NOT FOR USE IN DIAGNOSTIC OR THERAPEUTIC PROCEDURES'.