

PDE4C monoclonal antibody (M03A), clone 6A10

Purified Mouse Monoclonal Antibody (Mab)

Catalog # AT4667a

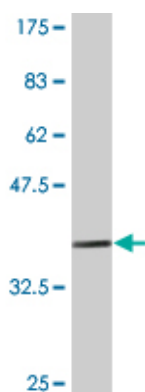
Product Information

Application	WB, E
Primary Accession	Q08493
Reactivity	Human
Host	Mouse
Clonality	Monoclonal
Isotype	IgG1 Kappa
Clone Names	6A10
Calculated MW	79902

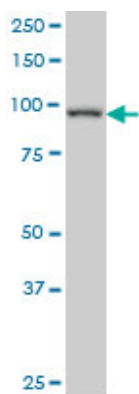
Additional Information

Gene ID	5143
Other Names	DPDE1, MGC126222
Target/Specificity	PDE4C (NP_000914, 1 a.a. ~ 99 a.a) partial recombinant protein with GST tag. MW of the GST tag alone is 26 KDa.
Dilution	WB~~1:1000 E~~N/A
Storage	Store at -20°C or lower. Aliquot to avoid repeated freezing and thawing.
Precautions	PDE4C monoclonal antibody (M03A), clone 6A10 is for research use only and not for use in diagnostic or therapeutic procedures.

Images



Western Blot detection against Immunogen (36.63 KDa) .



PDE4C monoclonal antibody (M03A), clone 6A10 Western Blot analysis of PDE4C expression in A-431.

Please note: All products are 'FOR RESEARCH USE ONLY. NOT FOR USE IN DIAGNOSTIC OR THERAPEUTIC PROCEDURES'.