

PSMA8 monoclonal antibody (M04A), clone 5A8

Purified Mouse Monoclonal Antibody (Mab)

Catalog # AT4670a

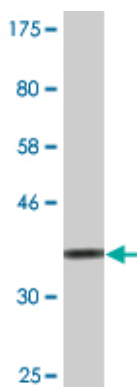
Product Information

Application	WB, E
Primary Accession	Q8TAA3
Reactivity	Human, Mouse, Rat
Host	Mouse
Clonality	Monoclonal
Isotype	IgG1 Kappa
Clone Names	5A8
Calculated MW	28530

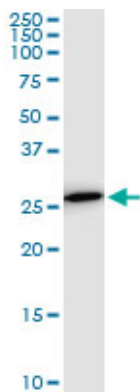
Additional Information

Gene ID	143471
Other Names	MGC26605, PSMA7L
Target/Specificity	PSMA8 (NP_653263, 143 a.a. ~ 242 a.a) partial recombinant protein with GST tag. MW of the GST tag alone is 26 KDa.
Dilution	WB~~1:1000 E~~N/A
Storage	Store at -20°C or lower. Aliquot to avoid repeated freezing and thawing.
Precautions	PSMA8 monoclonal antibody (M04A), clone 5A8 is for research use only and not for use in diagnostic or therapeutic procedures.

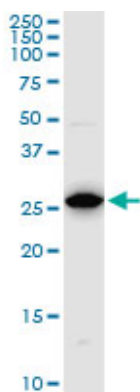
Images



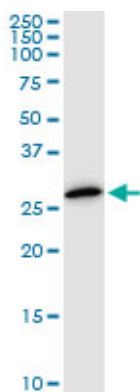
Western Blot detection against Immunogen (36.74 KDa) .



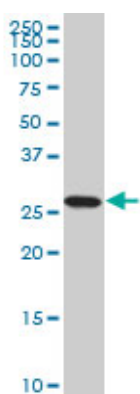
PSMA8 monoclonal antibody (M04A), clone 5A8. Western Blot analysis of PSMA8 expression in PC-12.



PSMA8 monoclonal antibody (M04A), clone 5A8. Western Blot analysis of PSMA8 expression in Raw 264.7.



PSMA8 monoclonal antibody (M04A), clone 5A8. Western Blot analysis of PSMA8 expression in NIH/3T3.



PSMA8 monoclonal antibody (M04A), clone 5A8. Western Blot analysis of PSMA8 expression in K-562.

Please note: All products are 'FOR RESEARCH USE ONLY. NOT FOR USE IN DIAGNOSTIC OR THERAPEUTIC PROCEDURES'.