

CTLA4 monoclonal antibody (M33), clone 8D7

Mouse monoclonal antibody raised against a partial recombinant CTLA4.

Catalog # AT4672a

Product Information

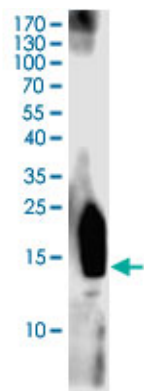
Application	WB, E
Primary Accession	P16410
Other Accession	BC074842
Reactivity	Human
Host	Mouse
Clonality	Monoclonal
Isotype	IgG1 Kappa
Clone Names	8D7
Calculated MW	24656

Additional Information

Gene ID	1493
Other Names	Cytotoxic T-lymphocyte protein 4, Cytotoxic T-lymphocyte-associated antigen 4, CTLA-4, CD152, CTLA4, CD152
Target/Specificity	CTLA4 (AAH74842.1, 37 a.a. ~ 161 a.a) partial recombinant protein with GST tag.
Dilution	WB~~1:500~1000 E~~N/A
Format	In 1x PBS, pH 7.4
Storage	Store at -20°C or lower. Aliquot to avoid repeated freezing and thawing.
Precautions	CTLA4 monoclonal antibody (M33), clone 8D7 is for research use only and not for use in diagnostic or therapeutic procedures.

Images

Western Blot detection against Immunogen (15.95 KDa) .



Please note: All products are 'FOR RESEARCH USE ONLY. NOT FOR USE IN DIAGNOSTIC OR THERAPEUTIC PROCEDURES'.